

N  
W E  
S

SCALE: 1" = 30'

30 15 0 15 30 45

**BUILDING CONNECTIONS**  
CONTRACTORS SHALL INVESTIGATE THE INTERIOR PLUMBING TO VERIFY EXACT LOCATIONS AND TYPE OF MATERIALS TO ALLOW FOR PROPER EXTERIOR RECONNECTION OF NEW MAINS AT EACH PROPOSED REFEED. THIS EFFORT SHALL BE INCLUDED IN THE BID FEES.

**SURFACE REPAIRS**  
ANY PAVED OR GRAVEL AREA THAT IS DAMAGED DURING THE PROJECT SHALL BE REPAIRED "IN KIND" OR PER THE PROVIDED CROSS SECTIONS (WHICHEVER IS MORE STRINGENT).

**WATER STRUCTURE SCHEDULE**

|                                         |                                         |
|-----------------------------------------|-----------------------------------------|
| 6" PR. 6" GATE VALVE IN BOX FG 913.63   | 14" PR. 8" GATE VALVE IN BOX FG 916.45  |
| 6" PR. 6" GATE VALVE IN BOX FG 913.72   | 15" PR. 8" GATE VALVE IN BOX FG 916.30  |
| 6" PR. 6" GATE VALVE IN BOX FG 914.75   | 6" PR. HYDRANT & VALVE IN BOX FG 915.97 |
| 6" PR. HYDRANT & VALVE IN BOX FG 913.47 | 6" PR. HYDRANT & VALVE IN BOX FG 917.52 |
| 6" PR. 8" GATE VALVE FG 917.43          | 17" PR. 8" GATE VALVE IN BOX FG 917.83  |

**CROSSING SCHEDULE**

|                                                                           |                                                               |
|---------------------------------------------------------------------------|---------------------------------------------------------------|
| D EX. 12" STORM B/P FIELD INVESTIGATE PR. 8" WATER T/P 907.80             | K FG. 914.42x EX. 8" WATER B/P 908.82 PR. 8" WATER T/P 907.32 |
| E EX. 12" WATER B/P APPROX. 908.50 PR. 8" WATER T/P 907.30                | L EX. 8" STORM B/P 911.55 PR. 8" WATER T/P 910.05             |
| F EX. 18" STORM B/P 908.56 (V.I.F.) PR. 8" WATER T/P 907.06               | M EX. 8" STORM B/P 911.59 PR. 8" WATER T/P 910.09             |
| G EX. 6" STORM B/P 908.80 (V.I.F.) PR. 8" WATER T/P 907.30                | N EX. 8" STORM B/P 912.00 PR. 8" SAN T/P 907.58               |
| H EX. 915.49x PR. 8" WATER B/P 909.39 EX. 6" STORM T/P 909.70 (V.I.F.)    |                                                               |
| I EX. 915.35x EX. STEAM TUNNEL B/P APPROX. 909.85 PR. 8" WATER T/P 907.03 |                                                               |
| J EX. 914.47x EX. 12" STORM B/P 911.08 PR. 8" WATER T/P 908.20            |                                                               |

**SANITARY STRUCTURE SCHEDULE**

|                                                                                                                                               |                                                                                                                                              |
|-----------------------------------------------------------------------------------------------------------------------------------------------|----------------------------------------------------------------------------------------------------------------------------------------------|
| 18" EX. SANITARY MANHOLE RIM 917.98 8" NE INV. 905.78 6" SW INV. 905.68 6" SE INV. 907.43 6" NE INV. 911.53 8" S INV. 911.48 8" S INV. 907.33 | 19" EX. SANITARY MANHOLE RIM 914.82 6" NE INV. 909.52 10" E INV. 909.27 8" W INV. 909.22 6" NE INV. 911.53 8" S INV. 911.48 8" S INV. 907.33 |
| 17" EX. SANITARY MANHOLE RIM 914.88 6" N INV. 910.36 6" N INV. 904.81 10" N INV. 904.71 10" E INV. 904.71 10" S INV. 904.71                   |                                                                                                                                              |

SEE PROJECT NO. K648-06  
4427 WOODLAND AVENUE  
FONTSVILLE, MI 48434-5093  
TEL. (248) 332-7931  
FAX. (248) 332-8257

CIVIL ENGINEERS  
LAND SURVEYORS  
LAND PLANNERS

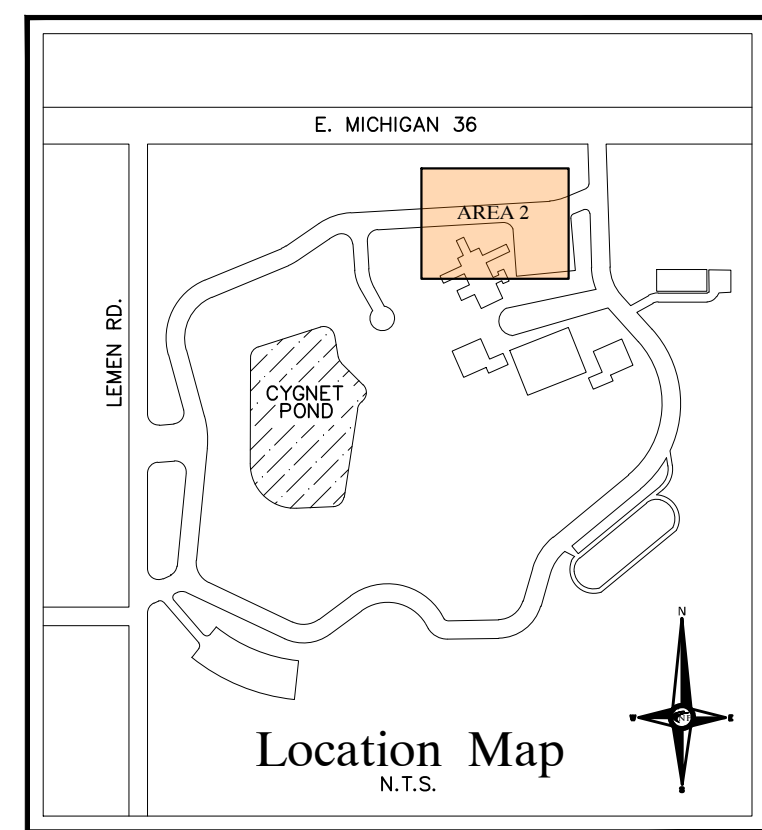
**ENGINEERS**

STATE OF MICHIGAN  
DEPARTMENT OF TECHNOLOGY, MANAGEMENT AND BUDGET  
STATE FACILITIES ADMINISTRATION  
DESIGN AND CONSTRUCTION DIVISION  
ADAM P. LACH, RA, NCARB, DIRECTOR

| PROJECT DESCRIPTION | DATE       | REVIEW |
|---------------------|------------|--------|
| BID Documents       | 03-17-2025 |        |
| Phase 500 90%       | 12-05-2024 |        |
| Phase 500 50%       | 08-15-2024 |        |
| Phase 400 50%       | 12-12-2023 |        |

**WOODLAND CORRECTIONAL CENTER  
- UTILITY IMPROVEMENT PROGRAM  
WHITMORE LAKE, LIVINGSTON COUNTY, MICHIGAN**

**IMPROVEMENT PLAN  
AREA 2**



**LEGEND**

|                     |                             |
|---------------------|-----------------------------|
| MANHOLE             | EXISTING SANITARY SEWER     |
| HYDRANT             | SAN. CLEAN OUT              |
| MANHOLE CATCH BASIN | EXISTING WATER MAIN         |
| UTILITY POLE        | EXISTING STORM SEWER        |
| GUY POLE            | EX. R. Y. CATCH BASIN       |
| GUY WIRE            | EXISTING BURIED CABLES      |
|                     | OVERHEAD LINES              |
|                     | LIGHT POLE                  |
|                     | SIGN                        |
| C.O.                | EXISTING GAS MAIN           |
| MANHOLE             | PR. SANITARY SEWER          |
| HYDRANT             | PR. WATER MAIN              |
| INLET               | PR. STORM SEWER             |
|                     | PR. R. Y. CATCH BASIN       |
|                     | SAND BACKFILL (95% DENSITY) |
|                     | PROPOSED LIGHT POLE         |

**REDUCED ACCESS AREAS**  
THERE MAY BE AREAS THAT PROVIDE LIMITED OR REDUCED ACCESS WIDTH/AREA WITHIN THE FACILITY TO PERFORM THE PREFERRED METHOD OF HYDRO EXCAVATION DUE TO SIZE OF THE REQUIRED VEHICLES/EQUIPMENT. THE CONTRACTOR MAY REQUEST AN ALTERNATE MEANS OF EXCAVATION TO BE REVIEWED AND APPROVED BY THE FACILITY PRIOR TO PERFORMING THE WORK. LOCATIONS WHERE THIS MAY OCCUR HAVE BEEN NOTED IN EACH AREA OF WORK.

|             |              |
|-------------|--------------|
| PROJECT NO. | 47203238.S00 |
| INDEX       |              |
| PCA         | 00-0000      |
| DRAWN BY    | MAW          |
| DESIGNED BY | MAW          |
| JC/ENG BY   | SWIS         |

**C4**



NE PROJECT NO. K44806  
 4575 WOODLAND AVENUE  
 FOUNTAIN, MI 48342-5083  
 CIVIL ENGINEERS  
 LAND SURVEYORS  
 LAND PLANNERS  
 NF  
 ENGINEERS

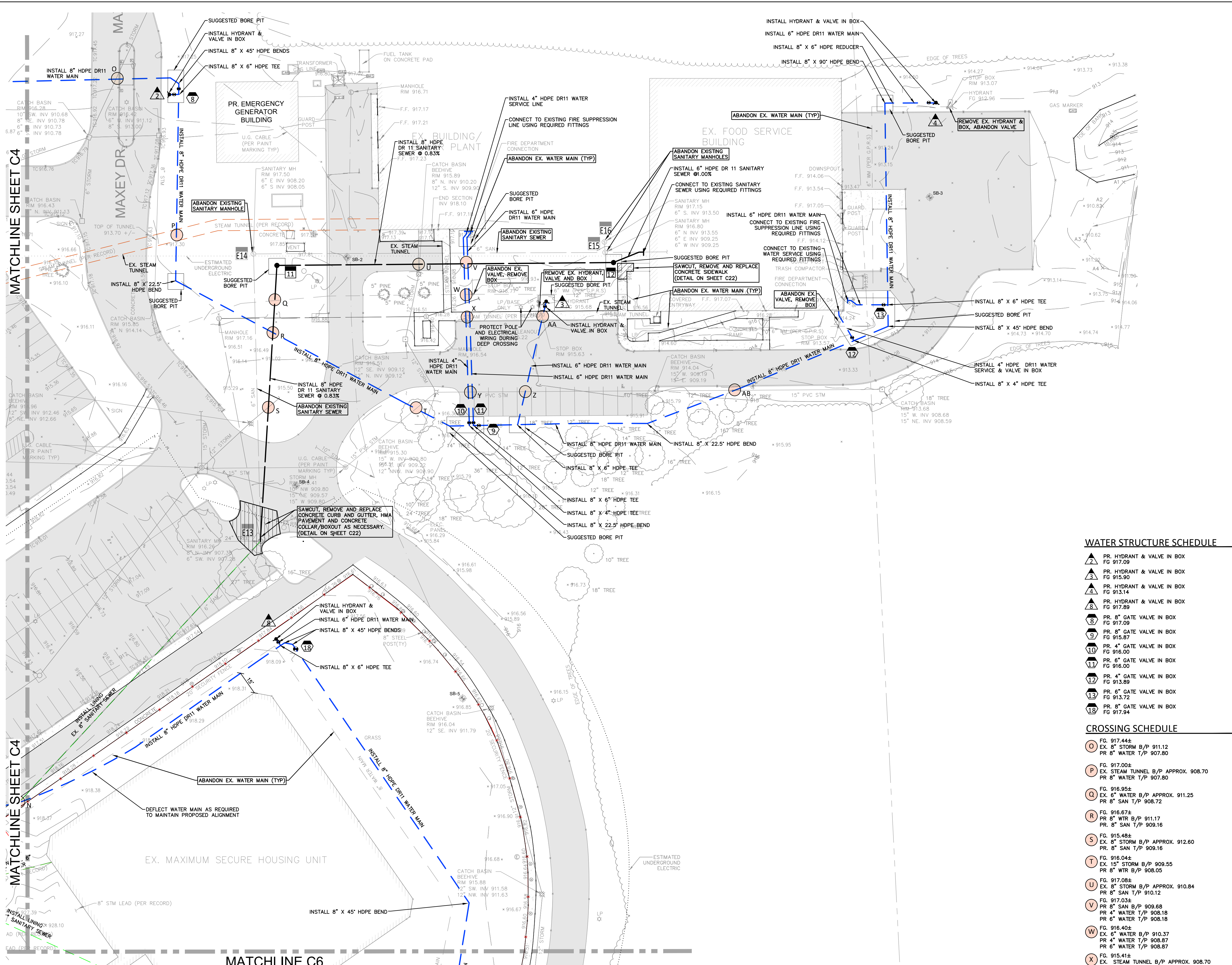
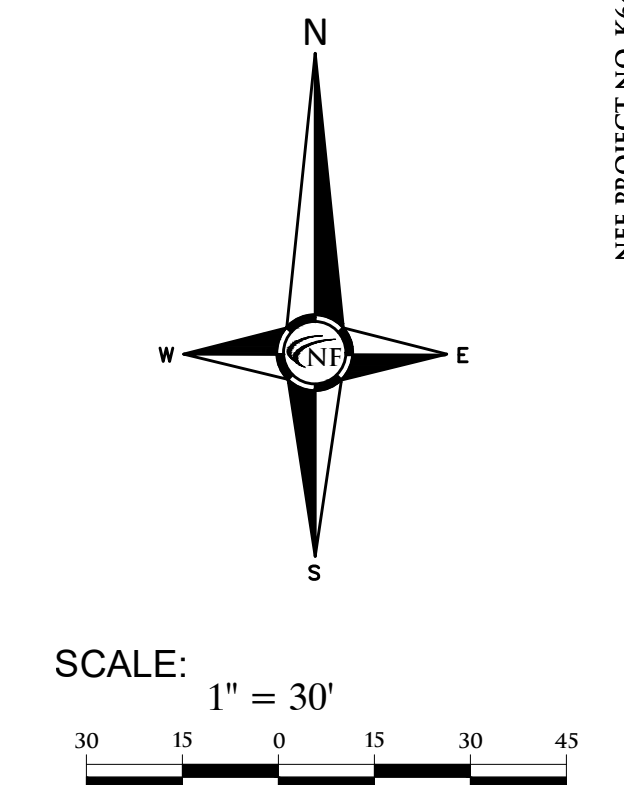
STATE OF MICHIGAN  
 DEPARTMENT OF TECHNOLOGY, MANAGEMENT AND BUDGET  
 STATE FACILITIES ADMINISTRATION  
 DESIGN AND CONSTRUCTION DIVISION  
 ADAM P. LACH, RA, NCARB, DIRECTOR

|            |               |               |
|------------|---------------|---------------|
| 03-17-2025 | Bid Documents | Phase 500 90% |
| 12-05-2024 | Phase 500 90% | Phase 500 50% |
| 08-15-2024 | Phase 500 50% | Phase 400 50% |
| 12-12-2023 | Phase 400 50% | REVIEW        |
|            | DATE          |               |

PROJECT DESCRIPTION  
**WOODLAND CORRECTIONAL CENTER  
 - UTILITY IMPROVEMENT PROGRAM  
 AREA 3**  
 WHITMORE LAKE, LIVINGSTON COUNTY, MICHIGAN

PROJECT NO. 4720328.S00  
 INDEX 1  
 PCA 00-0000  
 DRAWN BY MAW  
 DESIGNED BY MAW  
 CHECKED BY JCIENG BY SWS

**C5**



**REDUCED ACCESS AREAS**

THERE MAY BE AREAS THAT PROVIDE LIMITED OR REDUCED ACCESS WITHIN AREA WITHIN THE FACILITY TO PERFORM THE PREFERRED METHOD OF HYDRO EXCAVATION DUE TO SIZE OF THE REQUIRED VEHICLES/EQUIPMENT. THE CONTRACTOR MAY REQUEST AN ALTERNATE MEANS OF EXCAVATION TO BE REVIEWED AND APPROVED BY THE FACILITY PRIOR TO PERFORMING THE WORK. LOCATIONS WHERE THIS MAY OCCUR HAVE BEEN NOTED IN EACH AREA OF WORK.

**BUILDING CONNECTIONS**

CONTRACTORS SHALL INVESTIGATE THE INTERIOR PLUMBING TO VERIFY EXACT LOCATIONS AND TYPE OF MATERIALS TO ALLOW FOR PROPER EXTERIOR RECONNECTION OF NEW MAINS AT EACH PROPOSED REEF. THIS EFFORT SHALL BE INCLUDED IN THE BID FEES.

**SURFACE REPAIRS**

ANY PAVED OR GRAVEL AREA THAT IS DAMAGED DURING THE PROJECT SHALL BE REPAIRED "IN KIND" OR PER THE PROVIDED CROSS SECTIONS (WHICHEVER IS MORE STRINGENT).

**SANITARY STRUCTURE SCHEDULE**

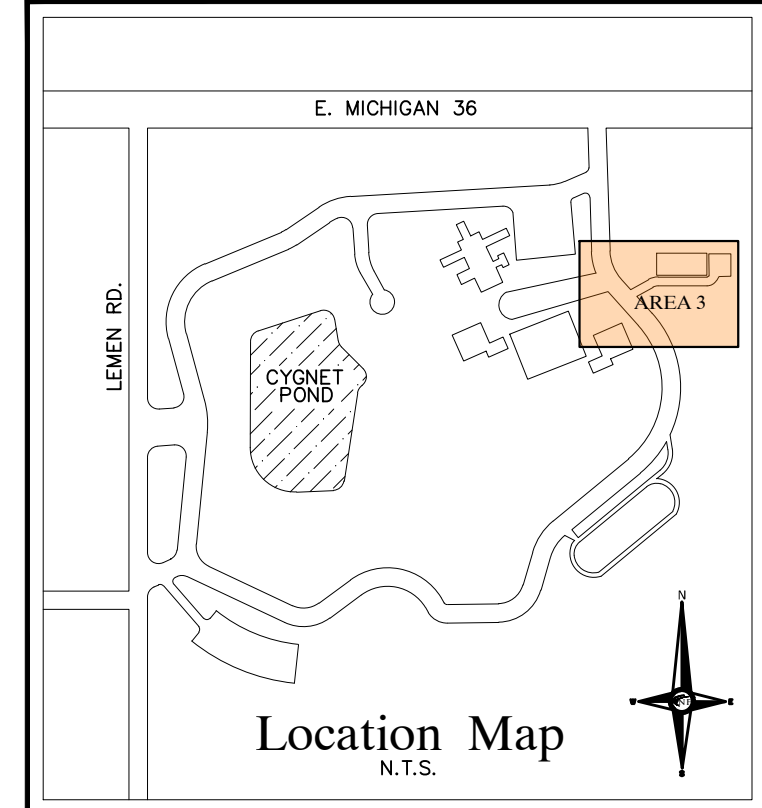
|    |                                                                               |    |                                                                                 |
|----|-------------------------------------------------------------------------------|----|---------------------------------------------------------------------------------|
| 18 | EX. SANITARY MANHOLE<br>RIM 916.28<br>8" N. INV. 907.38<br>6" SW. INV. 907.28 | 16 | EX. SANITARY MANHOLE<br>RIM 917.15<br>6" S. INV. 913.50                         |
| 17 | EX. SANITARY MANHOLE<br>RIM 916.45<br>6" E. INV. 908.20<br>6" S. INV. 908.05  | 10 | PR. 4" SANITARY MANHOLE<br>RIM 916.45<br>8" N. INV. 907.37<br>6" W. INV. 907.36 |
| 15 | EX. SANITARY MANHOLE<br>RIM 916.80<br>6" N. INV. 913.55<br>6" E. INV. 909.25  | 11 | PR. 4" SANITARY MANHOLE<br>RIM 917.66<br>8" S. INV. 908.72<br>6" E. INV. 908.74 |
|    |                                                                               | 12 | PR. 4" SANITARY MANHOLE<br>RIM 916.41<br>6" W. INV. 910.50                      |

**WATER STRUCTURE SCHEDULE**

|    |                                         |
|----|-----------------------------------------|
| 7  | PR. HYDRANT & VALVE IN BOX<br>FG 917.09 |
| 3  | PR. HYDRANT & VALVE IN BOX<br>FG 915.90 |
| 4  | PR. HYDRANT & VALVE IN BOX<br>FG 913.14 |
| 8  | PR. HYDRANT & VALVE IN BOX<br>FG 917.89 |
| 5  | PR. 8" GATE VALVE IN BOX<br>FG 917.09   |
| 9  | PR. 8" GATE VALVE IN BOX<br>FG 915.87   |
| 10 | PR. 8" GATE VALVE IN BOX<br>FG 916.00   |
| 11 | PR. 8" GATE VALVE IN BOX<br>FG 916.00   |
| 12 | PR. 4" GATE VALVE IN BOX<br>FG 913.89   |
| 13 | PR. 6" GATE VALVE IN BOX<br>FG 913.72   |
| 19 | PR. 8" GATE VALVE IN BOX<br>FG 917.94   |

**CROSSING SCHEDULE**

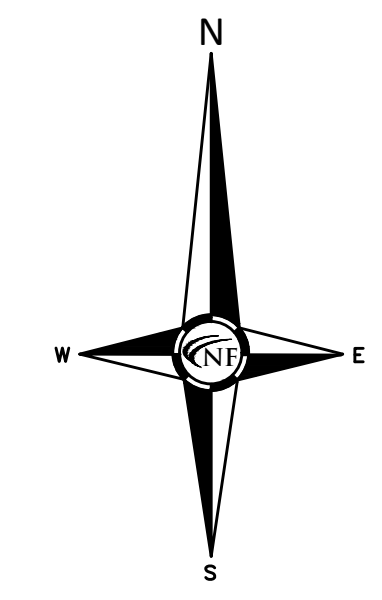
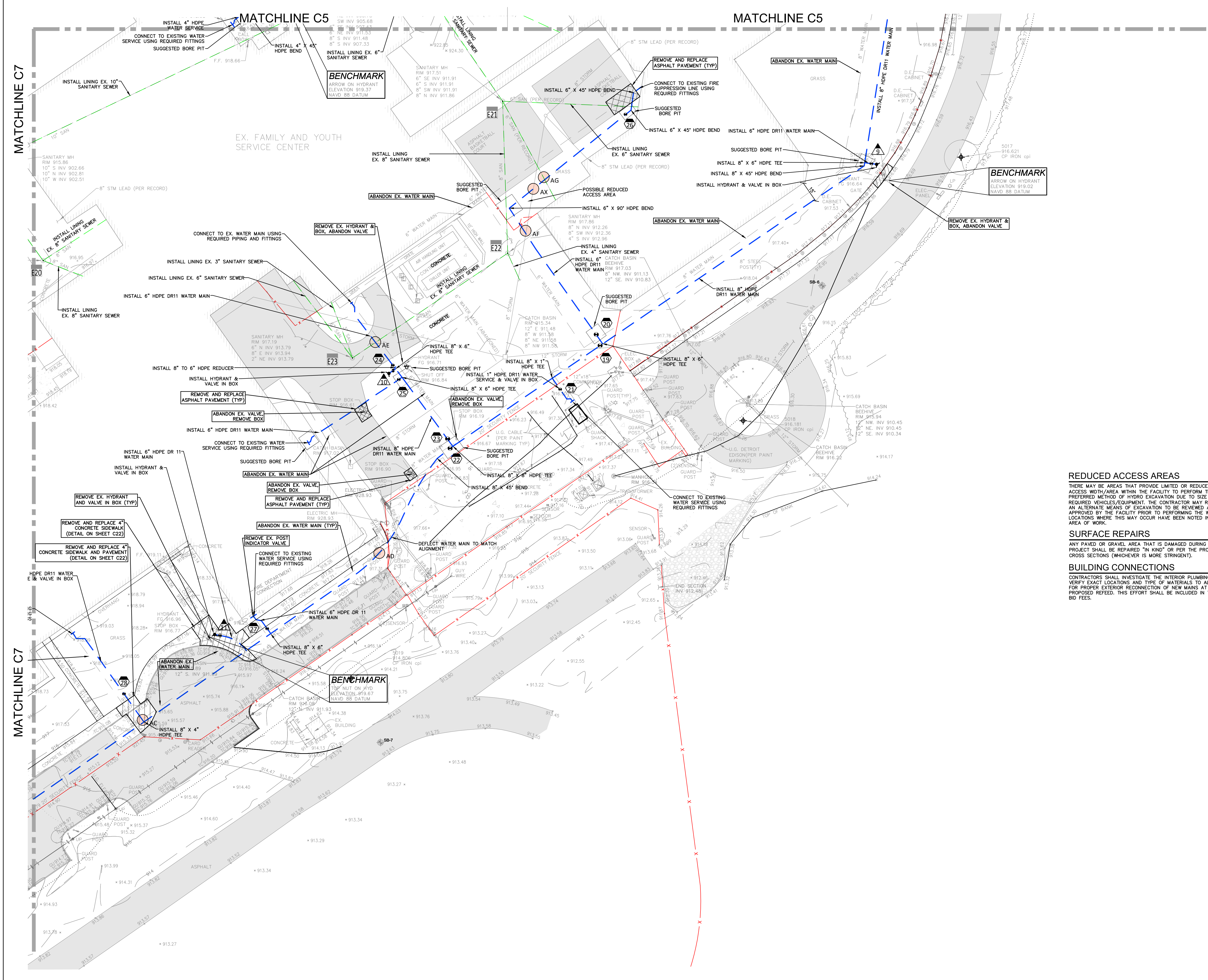
|    |                                                                                                          |
|----|----------------------------------------------------------------------------------------------------------|
| D  | FG. 917.44±<br>EX. 8" STORM B/P 911.12<br>PR. 8" WATER T/P 907.80                                        |
| P  | FG. 917.00±<br>EX. STEAM TUNNEL B/P APPROX. 908.70<br>PR. 8" WATER T/P 907.80                            |
| Q  | FG. 916.95±<br>EX. 6" WATER B/P APPROX. 911.25<br>PR. 8" SAN T/P 908.72                                  |
| R  | FG. 916.67±<br>PR. 8" WTR B/P 911.17<br>PR. 8" SAN T/P 909.16                                            |
| S  | FG. 915.48±<br>EX. 8" STORM B/P APPROX. 912.60<br>PR. 8" SAN T/P 909.16                                  |
| T  | FG. 916.04±<br>EX. 15" STORM B/P 909.55<br>PR. 8" WTR B/P 908.05                                         |
| U  | FG. 917.08±<br>EX. 8" STORM B/P APPROX. 910.84<br>PR. 8" SAN T/P 910.12                                  |
| V  | FG. 917.03±<br>PR. 8" SAN B/P 909.68<br>PR. 4" WATER T/P 908.18<br>PR. 6" WATER T/P 908.18               |
| W  | FG. 916.40±<br>EX. 6" WATER B/P 910.37<br>PR. 4" WATER T/P 908.87<br>PR. 6" WATER T/P 908.87             |
| X  | FG. 915.41±<br>EX. STEAM TUNNEL B/P APPROX. 908.70<br>PR. 4" WATER T/P 907.30<br>PR. 6" WATER T/P 907.30 |
| Y  | FG. 915.41±<br>EX. 15" STORM B/P 908.74<br>PR. 4" WATER T/P 907.24<br>PR. 6" WATER T/P 907.24            |
| Z  | FG. 914.98±<br>EX. 15" STORM B/P 908.68<br>PR. 8" WATER T/P 907.15                                       |
| AA | FG. 915.70±<br>EX. STEAM TUNNEL B/P APPROX. 908.70<br>PR. 6" WATER T/P 907.30                            |
| AB | FG. 914.14±<br>EX. 15" STORM B/P 908.65<br>PR. 8" WATER T/P 907.15                                       |



**LEGEND**

|                      |                             |
|----------------------|-----------------------------|
| MANHOLE              | EXISTING SANITARY SEWER     |
| HYDRANT              | SAN. CLEAN OUT              |
| MANHOLE CATCH BASIN  | EXISTING WATER MAIN         |
| UTILITY POLE         | EXISTING BURIED CABLES      |
| GUY POLE             | OVERHEAD LINES              |
| GUY WIRE             | LIGHT POLE                  |
| EX. STEAM TUNNEL B/P | SIGN                        |
| EX. 8" STORM B/P     | EXISTING GAS MAIN           |
| EX. 15" STORM B/P    | PR. SANITARY SEWER          |
| PR. 8" SAN T/P       | PR. WATER MAIN              |
| PR. 4" WATER T/P     | PR. STORM SEWER             |
| PR. 6" WATER T/P     | PR. R. Y. CATCH BASIN       |
| PR. 8" WATER T/P     | SAND BACKFILL (95% DENSITY) |
| PR. 15" WATER T/P    | PROPOSED LIGHT POLE         |





SCALE: 1" = 30'

**WATER STRUCTURE SCHEDULE**

- ▲ PR. HYDRANT & VALVE IN BOX FG 917.14
- ▲ PR. HYDRANT & VALVE IN BOX FG 916.67
- ▲ PR. HYDRANT & VALVE IN BOX FG 917.14
- ▲ PR. 8" GATE VALVE IN BOX FG 917.40
- ▲ PR. 6" GATE VALVE IN BOX FG 917.42
- ▲ PR. 1" GATE VALVE IN BOX FG 916.53
- ▲ PR. 8" GATE VALVE IN BOX FG 916.37
- ▲ PR. 8" GATE VALVE IN BOX FG 916.70
- ▲ PR. 6" GATE VALVE IN BOX FG 916.70
- ▲ PR. 6" GATE VALVE IN BOX FG 918.60
- ▲ PR. 6" GATE VALVE IN BOX FG 918.79
- ▲ PR. 6" GATE VALVE IN BOX FG 917.49
- ▲ PR. 4" GATE VALVE IN BOX FG 915.62

**CROSSING SCHEDULE**

- AC FG. 915.53± EX. 8" WATER B/P 910.03 PR. 8" WATER T/P 908.53
- AD FG. 917.17± EX. 8" SAN B/P 911.67 PR. 8" WATER T/P 910.17
- AE FG. 917.10± EX. 8" SAN B/P 913.63 PR. 8" WATER T/P 911.60
- AF FG. 918.06± EX. 8" STORM B/P 912.80 PR. 8" WATER T/P 911.30
- AG FG. 917.66± EX. 8" SAN B/P 912.08 PR. 8" WATER T/P 910.58
- AX FG. 917.70± EX. 8" STORM B/P V.I.F. PR. 8" WATER T/P 910.58

**SANITARY STRUCTURE SCHEDULE**

- E21 EX. SANITARY MANHOLE RIM 917.51 6" S. INV. 911.91 6" S. INV. 911.91 8" SW. INV. 911.91 8" N. INV. 911.86
- E22 EX. SANITARY MANHOLE RIM 917.86 6" S. INV. 912.96 8" SW. INV. 912.36 8" N. INV. 913.79
- E23 EX. SANITARY MANHOLE RIM 917.86 6" S. INV. 912.96 8" SW. INV. 912.36 8" N. INV. 913.79

**REDUCED ACCESS AREAS**

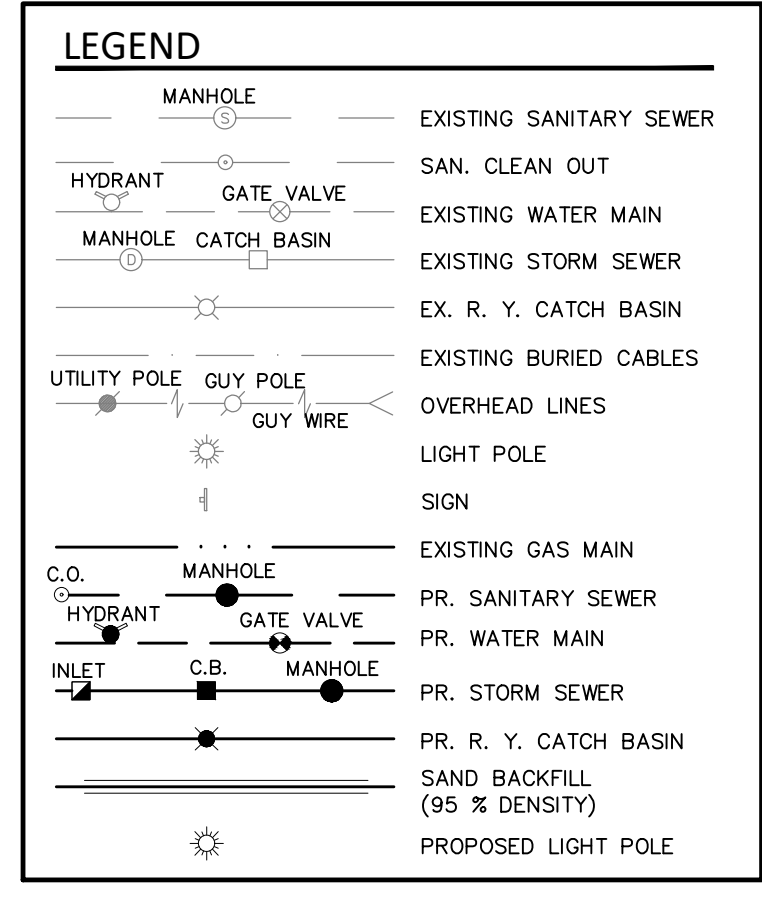
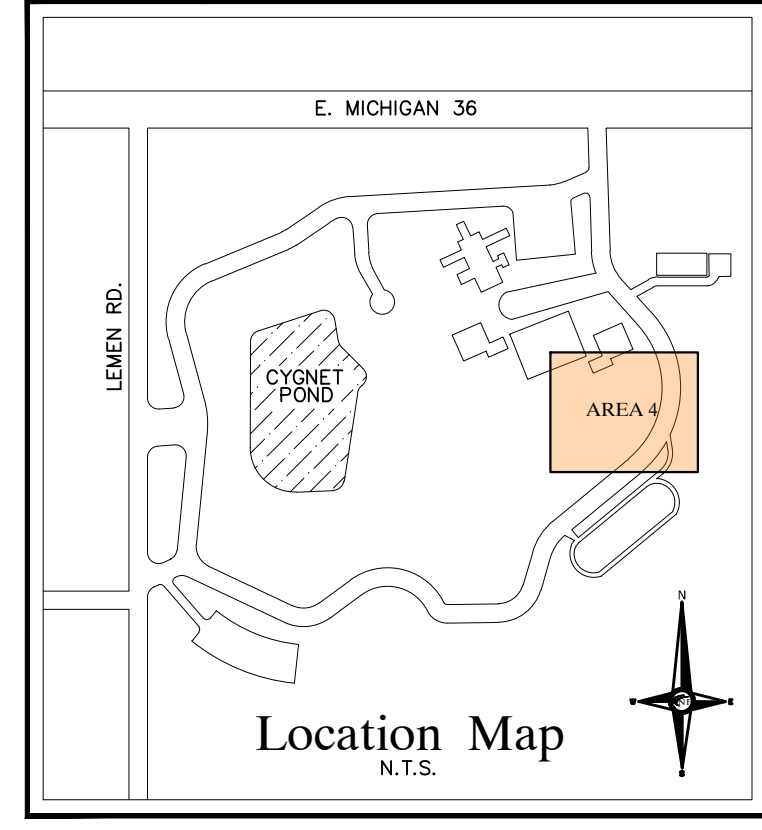
THERE MAY BE AREAS THAT PROVIDE LIMITED OR REDUCED ACCESS WIDTH/AREA WITHIN THE FACILITY TO PERFORM THE PREFERRED METHOD OF HYDRO EXCAVATION DUE TO SIZE OF THE REQUIRED VEHICLES/EQUIPMENT. THE CONTRACTOR MAY REQUEST AN ALTERNATE MEANS OF EXCAVATION TO BE REVIEWED AND APPROVED BY THE FACILITY PRIOR TO PERFORMING THE WORK. LOCATIONS WHERE THIS MAY OCCUR HAVE BEEN NOTED IN EACH AREA OF WORK.

**SURFACE REPAIRS**

ANY PAVED OR GRAVEL AREA THAT IS DAMAGED DURING THE PROJECT SHALL BE REPAIRED "IN KIND" OR PER THE PROVIDED CROSS SECTIONS (WHICHEVER IS MORE STRINGENT).

**BUILDING CONNECTIONS**

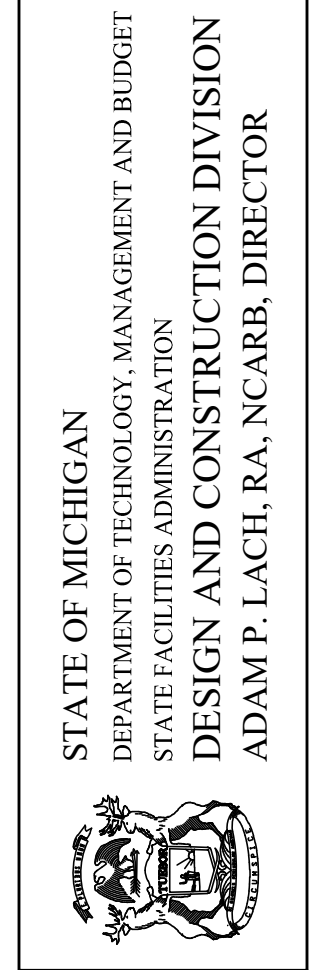
CONTRACTORS SHALL INVESTIGATE THE INTERIOR PLUMBING TO VERIFY EXACT LOCATIONS AND TYPE OF MATERIALS TO ALLOW FOR PROPER EXTERIOR RECONNECTION OF NEW MAINS AT EACH PROPOSED REFEED. THIS EFFORT SHALL BE INCLUDED IN THE BID FEES.



NEE PROJECT NO. K46406  
4427 WOODLAND AVENUE  
MONTICELLO, MI 48842-5032  
TEL. (248) 332-7931  
FAX. (248) 332-8257

CIVIL ENGINEERS  
LAND SURVEYORS  
LAND PLANNERS

STATE OF MICHIGAN  
DEPARTMENT OF TECHNOLOGY, MANAGEMENT AND BUDGET  
STATE FACILITIES ADMINISTRATION  
DESIGN AND CONSTRUCTION DIVISION  
ADAM P. LACH, RA, NCARB, DIRECTOR



| DATE                                         | PHASE                   | REVISION |
|----------------------------------------------|-------------------------|----------|
| 03-17-2025 <td>Bid Documents <td></td> </td> | Bid Documents <td></td> |          |
| 12-05-2024 <td>Phase 500 90% <td></td> </td> | Phase 500 90% <td></td> |          |
| 08-15-2024 <td>Phase 500 50% <td></td> </td> | Phase 500 50% <td></td> |          |
| 12-12-2023 <td>Phase 400 50% <td></td> </td> | Phase 400 50% <td></td> |          |

PROJECT DESCRIPTION  
**WOODLAND CORRECTIONAL CENTER**  
**- UTILITY IMPROVEMENT PROGRAM**  
WHITMORE LAKE, LIVINGSTON COUNTY, MICHIGAN

IMPROVEMENT PLAN  
**AREA 4**

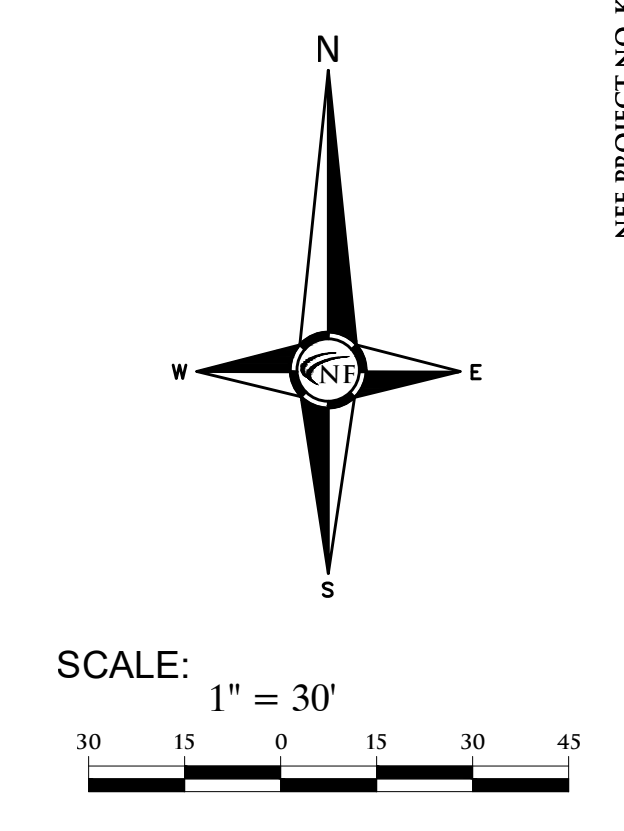
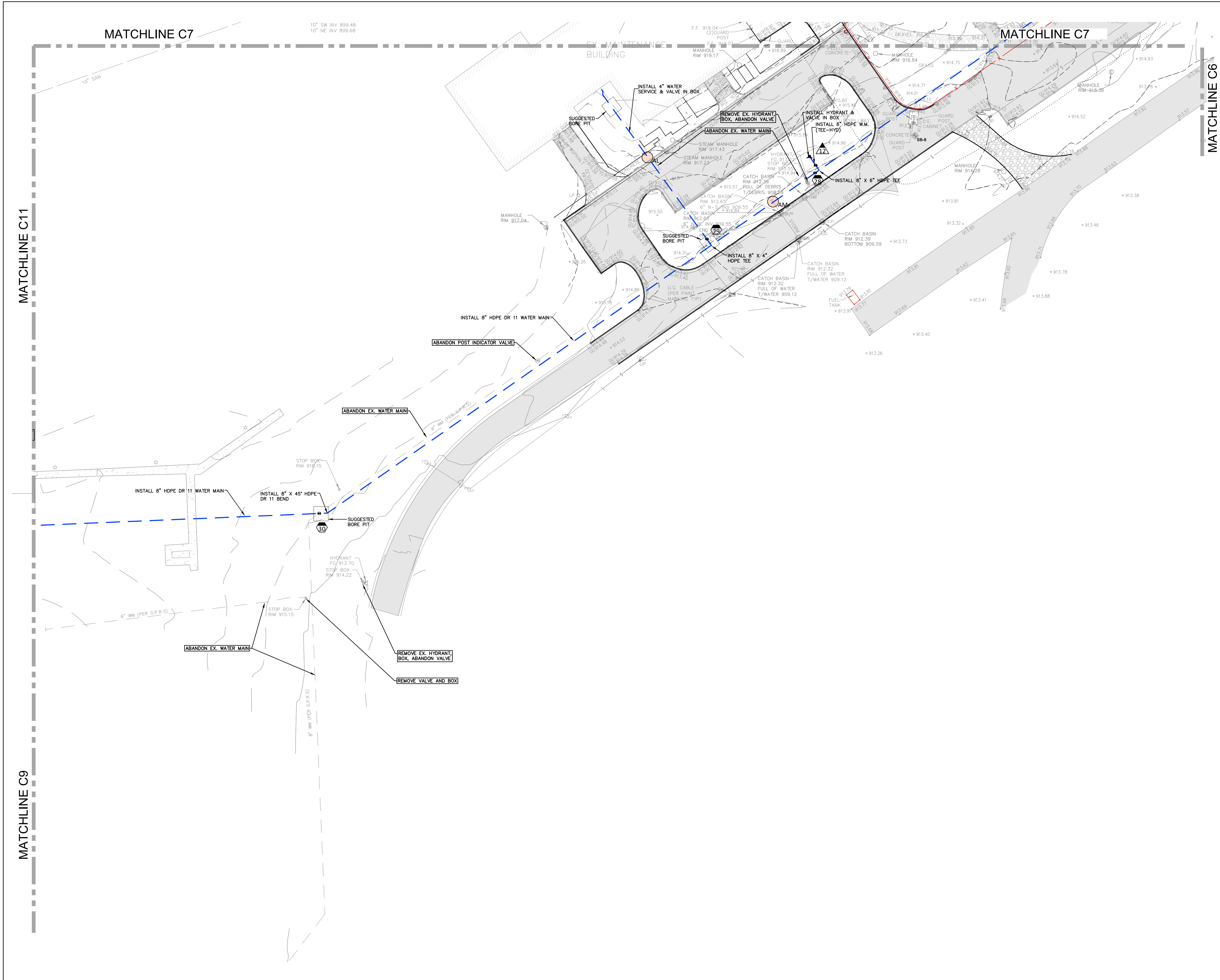
|             |              |
|-------------|--------------|
| PROJECT NO. | 47203238.S00 |
| INDEX       | 1            |
| PCA         | 00-0000      |
| DRAWN BY    | MAW          |
| DESIGNED BY | MAW          |
| JC/ENG BY   | SWS          |

**C6**









**REDUCED ACCESS AREAS**  
 THERE MAY BE AREAS THAT PROVIDE LIMITED OR REDUCED ACCESS WIDTH/AREA WITHIN THE FACILITY TO PERFORM THE PREFERRED METHOD OF HYDRO EXCAVATION DUE TO SIZE OF THE REQUIRED VEHICLES/EQUIPMENT. THE CONTRACTOR MAY REQUEST AN ALTERNATE MEANS OF EXCAVATION TO BE REVIEWED AND APPROVED BY THE FACILITY PRIOR TO PERFORMING THE WORK. LOCATIONS WHERE THIS MAY OCCUR HAVE BEEN NOTED IN EACH AREA OF WORK.

**BUILDING CONNECTIONS**  
 CONTRACTORS SHALL INVESTIGATE THE INTERIOR PLUMBING TO VERIFY EXACT LOCATIONS AND TYPE OF MATERIALS TO ALLOW FOR PROPER EXTERIOR RECONNECTION OF NEW MAINS AT EACH PROPOSED REFEED. THIS EFFORT SHALL BE INCLUDED IN THE BID FEES.

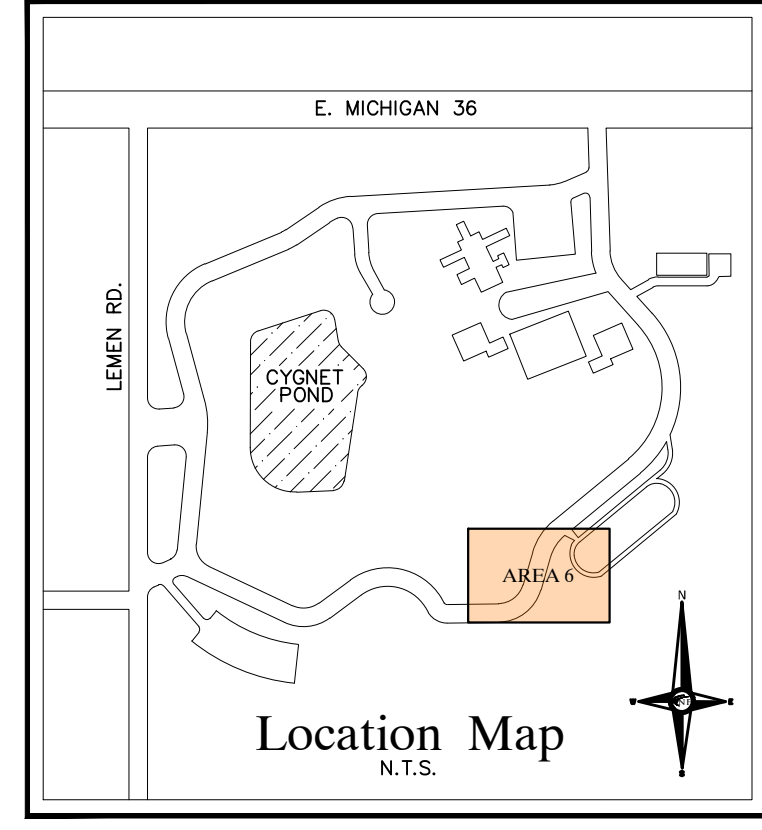
**SURFACE REPAIRS**  
 ANY PAVED OR GRAVEL AREA THAT IS DAMAGED DURING THE PROJECT SHALL BE REPAIRED "IN KIND" OR PER THE PROVIDED CROSS SECTIONS (WHICHEVER IS MORE STRINGENT).

**WATER STRUCTURE SCHEDULE**

|    |                                       |
|----|---------------------------------------|
| 12 | PR. HYDRANT<br>FG 914.68              |
| 28 | PR. 8" GATE VALVE IN BOX<br>FG 913.71 |
| 29 | PR. 4" GATE VALVE IN BOX<br>FG 914.20 |
| 30 | PR. 8" GATE VALVE IN BOX<br>FG 916.27 |

**CROSSING SCHEDULE**

|    |                                                                               |
|----|-------------------------------------------------------------------------------|
| AL | FG. 916.75±<br>EX. STEAM TUNNEL B/P APPROX. 911.75<br>PR. 4" WATER T/P 910.25 |
| AM | FG. 913.92±<br>EX. 6" STORM B/P 909.62<br>PR. 8" WATER T/P 908.12             |



**LEGEND**

|                     |                             |
|---------------------|-----------------------------|
| MANHOLE             | EXISTING SANITARY SEWER     |
| HYDRANT             | SAN. CLEAN OUT              |
| MANHOLE CATCH BASIN | EXISTING WATER MAIN         |
| UTILITY POLE        | EXISTING STORM SEWER        |
| GUY POLE            | EX. R. Y. CATCH BASIN       |
| GUY WIRE            | EXISTING BURIED CABLES      |
|                     | OVERHEAD LINES              |
|                     | LIGHT POLE                  |
|                     | SIGN                        |
| C.O. MANHOLE        | EXISTING GAS MAIN           |
| HYDRANT             | PR. SANITARY SEWER          |
| INLET               | PR. WATER MAIN              |
|                     | PR. STORM SEWER             |
|                     | PR. R. Y. CATCH BASIN       |
|                     | SAND BACKFILL (95% DENSITY) |
|                     | PROPOSED LIGHT POLE         |

NE PROJECT NO. K64806  
 4275 WOODLAND AVENUE  
 FOUNTAIN, MI 48342-5032  
 TEL. (248) 332-7931  
 FAX. (248) 332-8257

CIVIL ENGINEERS  
 LAND SURVEYORS  
 LAND PLANNERS

ENGINEERS

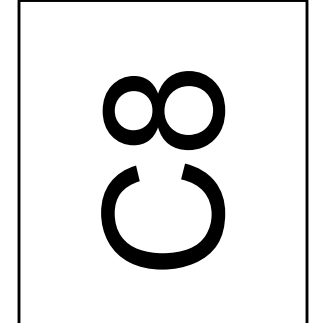
STATE OF MICHIGAN  
 DEPARTMENT OF TECHNOLOGY, MANAGEMENT AND BUDGET  
 STATE FACILITIES ADMINISTRATION  
 DESIGN AND CONSTRUCTION DIVISION  
 ADAM P. LACH, RA, NCARB, DIRECTOR

|            |               |        |
|------------|---------------|--------|
| 03-17-2025 | Bid Documents | DATE   |
| 12-05-2024 | Phase 500 90% | REVIEW |
| 08-15-2024 | Phase 500 50% |        |
| 12-12-2023 | Phase 400 50% |        |

PROJECT DESCRIPTION  
**WOODLAND CORRECTIONAL CENTER  
 - UTILITY IMPROVEMENT PROGRAM**  
 WHITMORE LAKE, LIVINGSTON COUNTY, MICHIGAN

IMPROVEMENT PLAN  
**AREA 6**

|                          |         |   |
|--------------------------|---------|---|
| PROJECT NO. 47203238.S0W | INDEX   | 1 |
| PCA                      | 00-0000 |   |
| DRAWN BY                 | MAW     |   |
| DESIGNED BY              | MAW     |   |
| JCI/ENG BY               | SW5     |   |





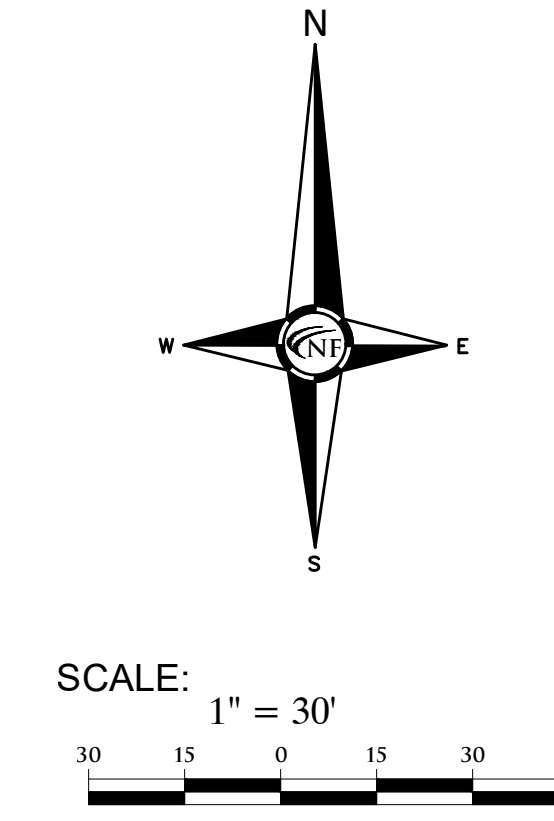
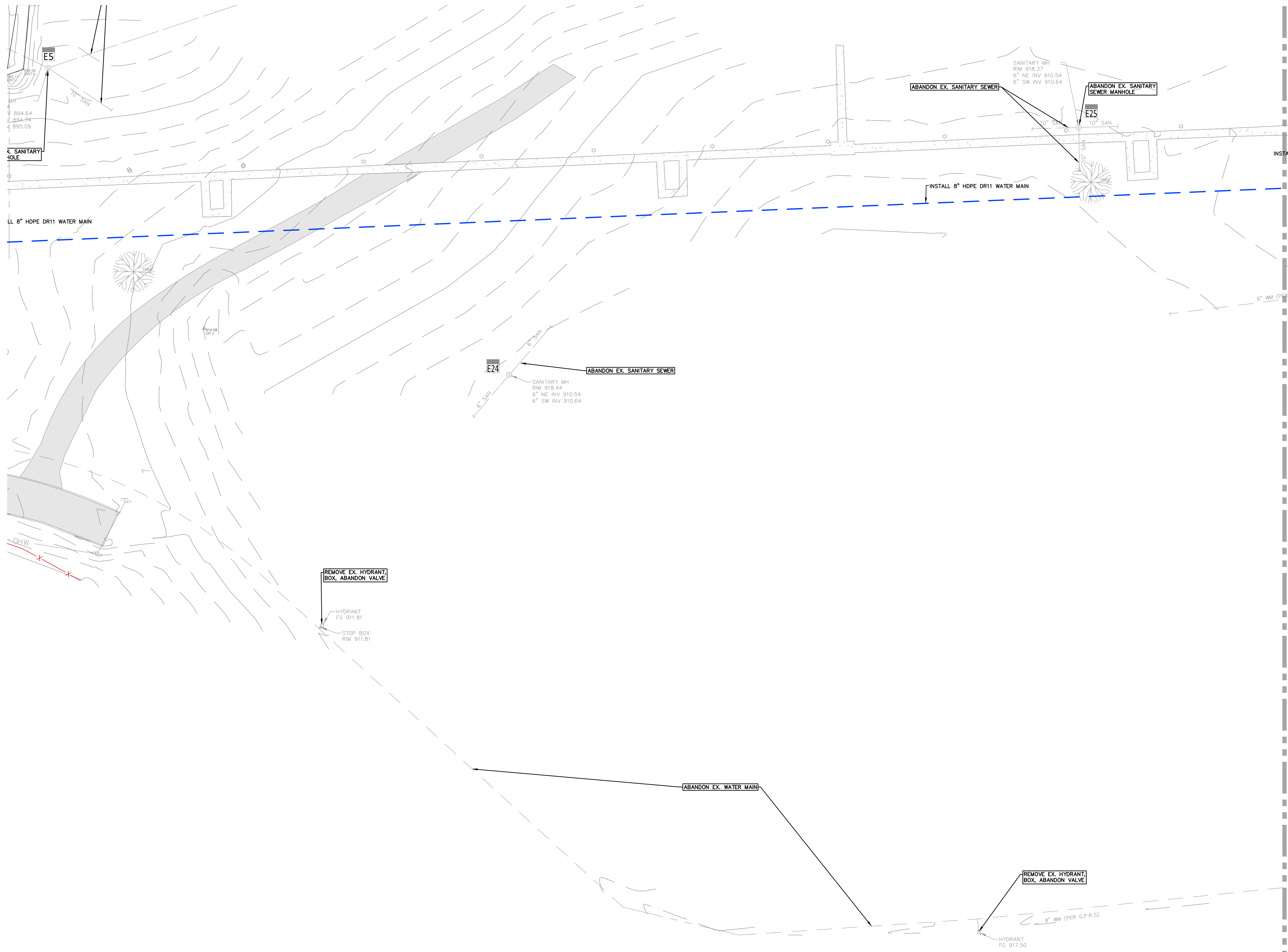
MATCHLINE C11

MATCHLINE C11

MATCHLINE C10

MATCHLINE C8

MATCHLINE C8

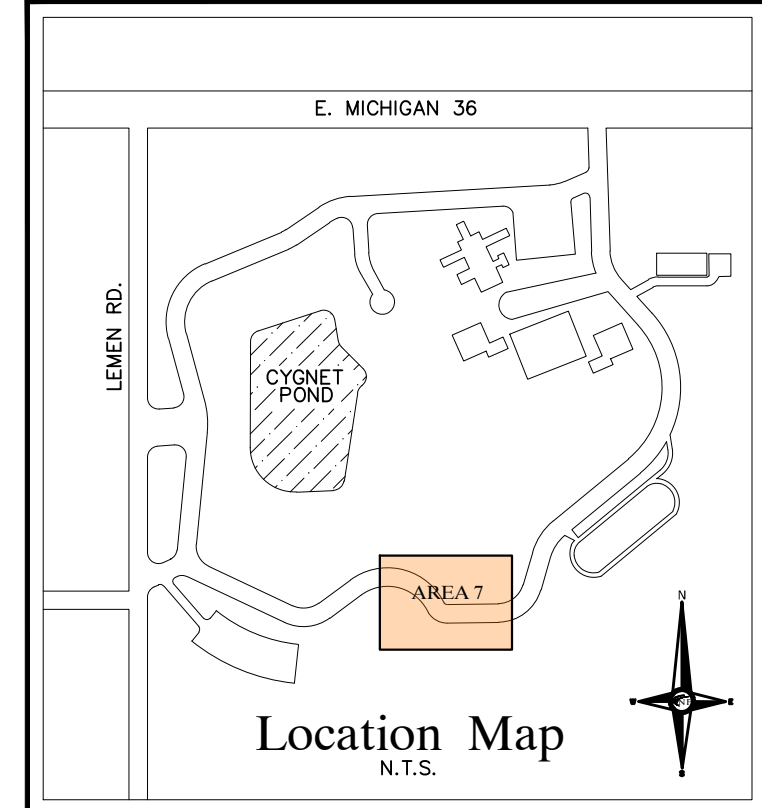


**REDUCED ACCESS AREAS**  
 THERE MAY BE AREAS THAT PROVIDE LIMITED OR REDUCED ACCESS WIDTH/AREA WITHIN THE FACILITY TO PERFORM THE PREFERRED METHOD OF HYDRO EXCAVATION DUE TO SIZE OF THE REQUIRED VEHICLES/EQUIPMENT. THE CONTRACTOR MAY REQUEST AN ALTERNATE MEANS OF EXCAVATION TO BE REVIEWED AND APPROVED BY THE FACILITY PRIOR TO PERFORMING THE WORK. LOCATIONS WHERE THIS MAY OCCUR HAVE BEEN NOTED IN EACH AREA OF WORK.

**SURFACE REPAIRS**  
 ANY PAVED OR GRAVEL AREA THAT IS DAMAGED DURING THE PROJECT SHALL BE REPAIRED "IN KIND" OR PER THE PROVIDED CROSS SECTIONS (WHICHEVER IS MORE STRINGENT).

**SANITARY STRUCTURE SCHEDULE**

|                                                                                                               |                                                                                        |
|---------------------------------------------------------------------------------------------------------------|----------------------------------------------------------------------------------------|
| <b>E5</b> EX. SANITARY MANHOLE<br>RM 908.58<br>10' NW INV. 894.64<br>10' NE INV. 894.74<br>10' SE INV. 895.82 | <b>E26</b> EX. SANITARY MANHOLE<br>RM 918.37<br>6" N. INV. 910.54<br>6" E. INV. 910.64 |
| <b>E24</b> EX. SANITARY MANHOLE<br>RM 918.44<br>6" N. INV. 910.54<br>6" E. INV. 910.64                        |                                                                                        |



**LEGEND**

|                     |                             |
|---------------------|-----------------------------|
| MANHOLE             | EXISTING SANITARY SEWER     |
| HYDRANT             | SAN. CLEAN OUT              |
| MANHOLE CATCH BASIN | EXISTING WATER MAIN         |
| UTILITY POLE        | EXISTING STORM SEWER        |
| GUY POLE            | EX. R. Y. CATCH BASIN       |
| GUY WIRE            | EXISTING BURIED CABLES      |
|                     | OVERHEAD LINES              |
|                     | LIGHT POLE                  |
|                     | SIGN                        |
|                     | EXISTING GAS MAIN           |
| C.O. MANHOLE        | PR. SANITARY SEWER          |
| HYDRANT GATE VALVE  | PR. WATER MAIN              |
| INLET C.B. MANHOLE  | PR. STORM SEWER             |
|                     | PR. R. Y. CATCH BASIN       |
|                     | SAND BACKFILL (95% DENSITY) |
|                     | PROPOSED LIGHT POLE         |

NEE PROJECT NO. K648-06  
 4675 WOODLAND CENTER DRIVE  
 FOUNTAIN, MI 48342-5031  
 TEL. (248) 332-7931  
 FAX. (248) 332-8257

CIVIL ENGINEERS  
 LAND SURVEYORS  
 LAND PLANNERS

ENGINEERS

STATE OF MICHIGAN  
 DEPARTMENT OF TECHNOLOGY, MANAGEMENT AND BUDGET  
 STATE FACILITIES ADMINISTRATION  
 DESIGN AND CONSTRUCTION DIVISION  
 ADAM P. LACH, RA, NCARB, DIRECTOR

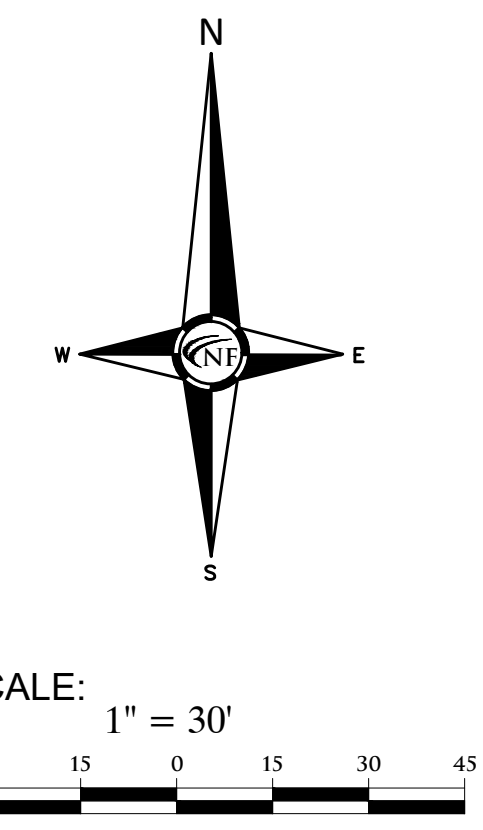
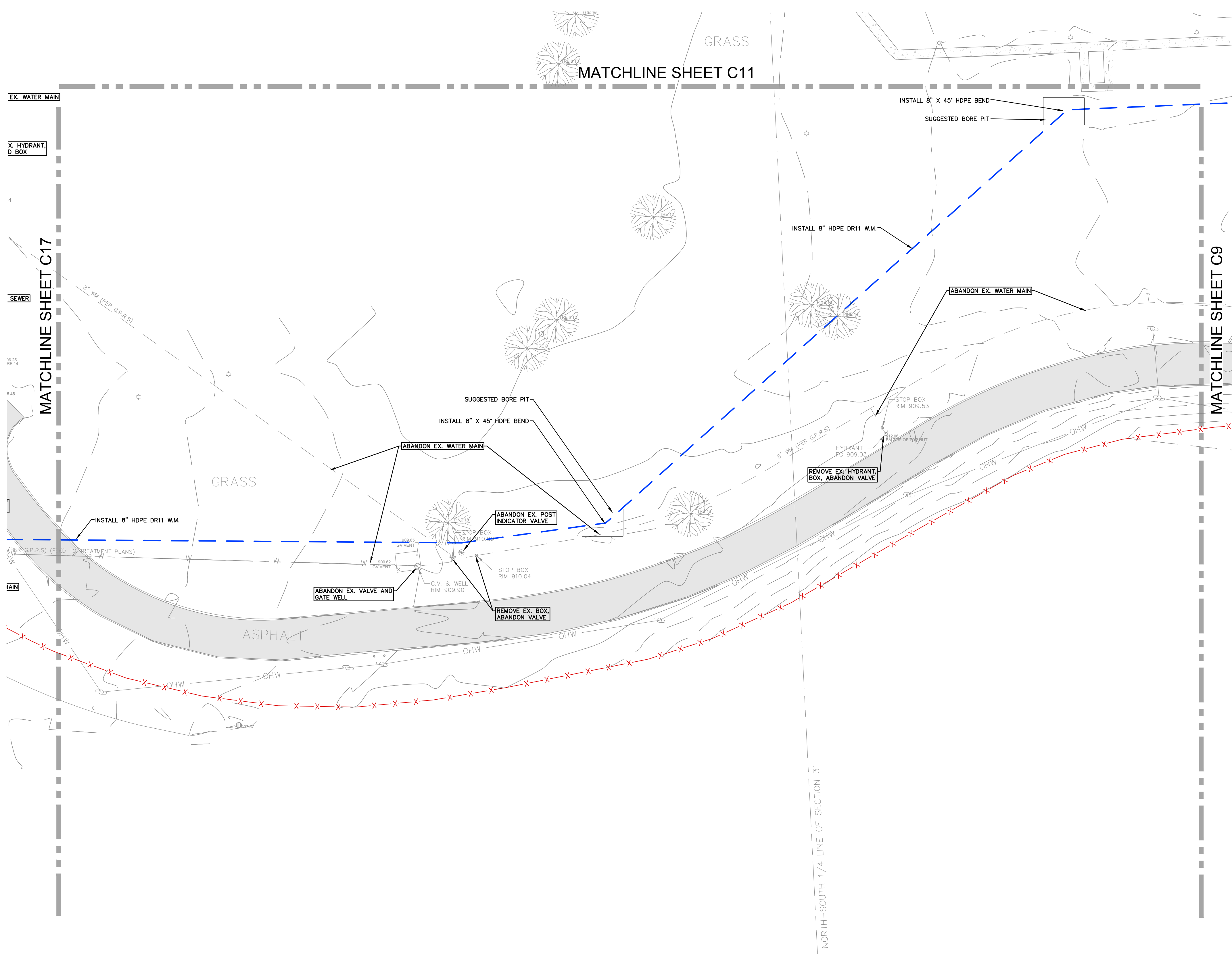
|            |            |            |            |
|------------|------------|------------|------------|
| 03-17-2025 | 03-17-2025 | 03-17-2025 | 03-17-2025 |
| 08-15-2024 | 08-15-2024 | 08-15-2024 | 08-15-2024 |
| 12-05-2024 | 12-05-2024 | 12-05-2024 | 12-05-2024 |
| 08-15-2024 | 08-15-2024 | 08-15-2024 | 08-15-2024 |
| 12-12-2023 | 12-12-2023 | 12-12-2023 | 12-12-2023 |
|            |            |            |            |

PROJECT DESCRIPTION  
**WOODLAND CORRECTIONAL CENTER  
 - UTILITY IMPROVEMENT PROGRAM**  
 WHITMORE LAKE, LIVINGSTON COUNTY, MICHIGAN

IMPROVEMENT PLAN  
**AREA 7**

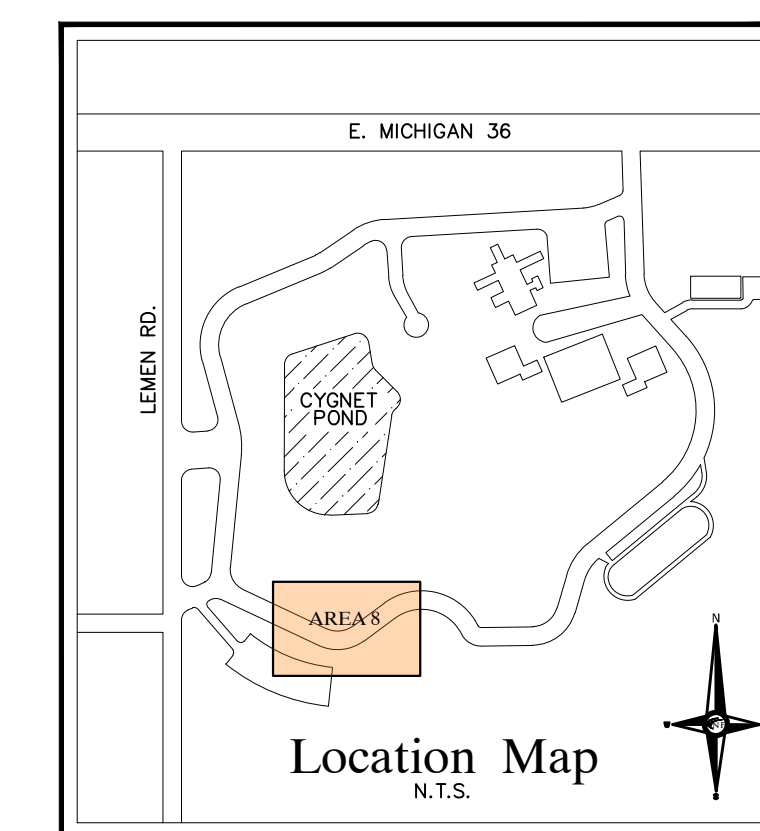
|                           |       |     |         |     |     |     |
|---------------------------|-------|-----|---------|-----|-----|-----|
| PROJECT NO. 47203128-050V | INDEX | PCA | 00-0000 | MAV | MAV | SWS |
|                           |       |     |         |     |     |     |

**C9**



**REDUCED ACCESS AREAS**  
 THERE MAY BE AREAS THAT PROVIDE LIMITED OR REDUCED ACCESS WIDTH/AREA WITHIN THE FACILITY TO PERFORM THE PREFERRED METHOD OF HYDRO EXCAVATION DUE TO SIZE OF THE REQUIRED VEHICLES/EQUIPMENT. THE CONTRACTOR MAY REQUEST AN ALTERNATE MEANS OF EXCAVATION TO BE REVIEWED AND APPROVED BY THE FACILITY PRIOR TO PERFORMING THE WORK. LOCATIONS WHERE THIS MAY OCCUR HAVE BEEN NOTED IN EACH AREA OF WORK.

**SURFACE REPAIRS**  
 ANY PAVED OR GRAVEL AREA THAT IS DAMAGED DURING THE PROJECT SHALL BE REPAIRED "IN KIND" OR PER THE PROVIDED CROSS SECTIONS (WHICHEVER IS MORE STRINGENT).



| LEGEND |                             |
|--------|-----------------------------|
|        | MANHOLE                     |
|        | HYDRANT                     |
|        | MANHOLE CATCH BASIN         |
|        | UTILITY POLE                |
|        | GUY POLE                    |
|        | C.O. MANHOLE                |
|        | HYDRANT                     |
|        | INLET                       |
|        | GATE VALVE                  |
|        | C.B. MANHOLE                |
|        | SAND BACKFILL (95% DENSITY) |
|        | PROPOSED LIGHT POLE         |
|        | EXISTING SANITARY SEWER     |
|        | SAN. CLEAN OUT              |
|        | EXISTING WATER MAIN         |
|        | EXISTING STORM SEWER        |
|        | EX. R. Y. CATCH BASIN       |
|        | EXISTING BURIED CABLES      |
|        | OVERHEAD LINES              |
|        | LIGHT POLE                  |
|        | SIGN                        |
|        | EXISTING GAS MAIN           |
|        | PR. SANITARY SEWER          |
|        | PR. WATER MAIN              |
|        | PR. STORM SEWER             |
|        | PR. R. Y. CATCH BASIN       |
|        | SAND BACKFILL (95% DENSITY) |
|        | PROPOSED LIGHT POLE         |

NEE PROJECT NO. K64806  
 4275 WOODLAND AVENUE  
 FOUNTAIN, MI 48342-5032  
 TEL. (248) 332-7931  
 FAX. (248) 332-8257

CIVIL ENGINEERS  
 LAND SURVEYORS  
 LAND PLANNERS

ENGINEERS

STATE OF MICHIGAN  
 DEPARTMENT OF TECHNOLOGY, MANAGEMENT AND BUDGET  
 STATE FACILITIES ADMINISTRATION  
 DESIGN AND CONSTRUCTION DIVISION  
 ADAM P. LACH, RA, NCARB, DIRECTOR

| DATE       | REVISION       |
|------------|----------------|
| 03-17-2025 | Rev. Documents |
| 12-05-2024 | Phase 500 90%  |
| 08-15-2024 | Phase 500 50%  |
| 12-12-2023 | Phase 400 50%  |

PROJECT DESCRIPTION

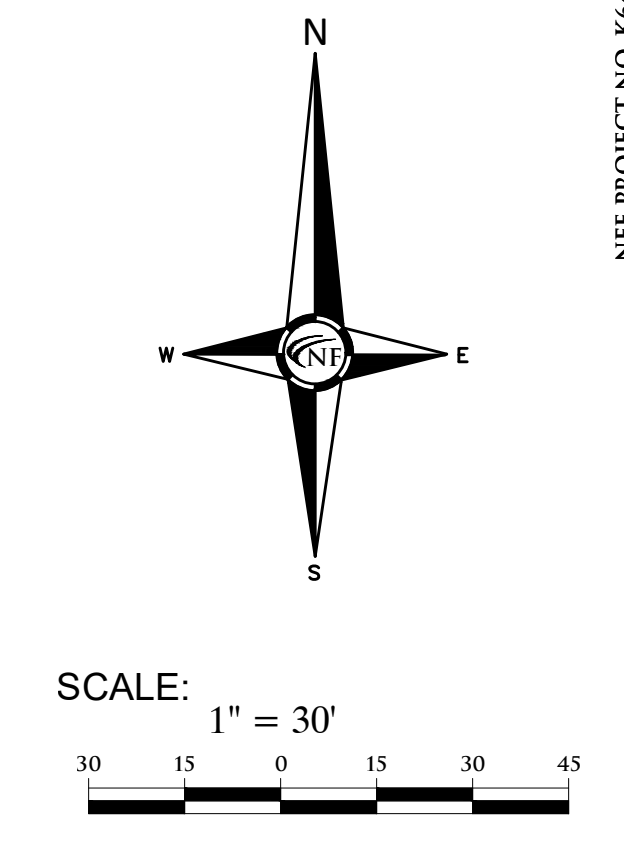
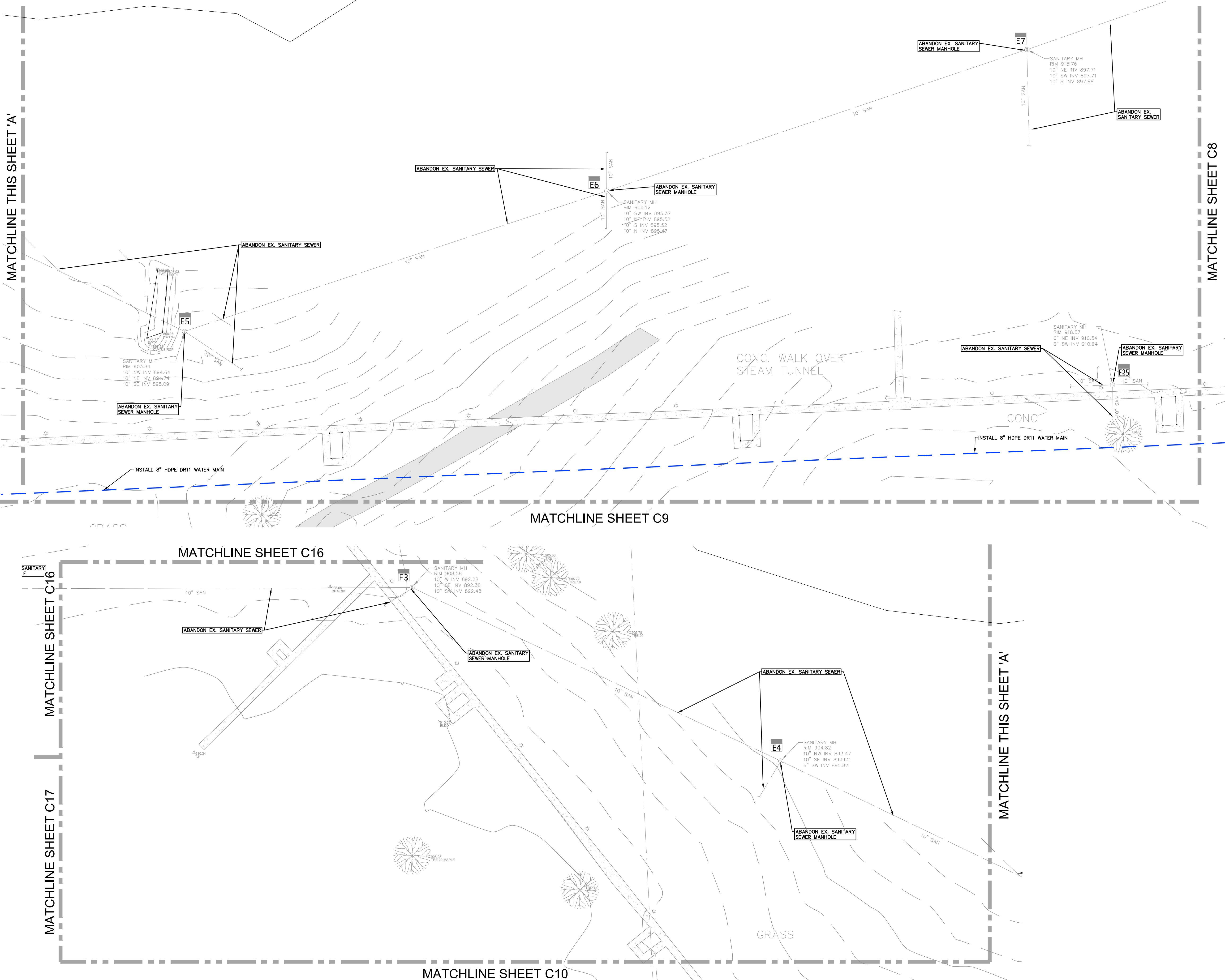
**WOODLAND CORRECTIONAL CENTER**  
**- UTILITY IMPROVEMENT PROGRAM**  
 WHITMORE LAKE, LIVINGSTON COUNTY, MICHIGAN

IMPROVEMENT PLAN  
**AREA 8**

|             |               |
|-------------|---------------|
| PROJECT NO. | 472203128.SDW |
| INDEX       | 1             |
| PCA         | 00-0000       |
| DRAWN BY    | MWV           |
| DESIGNED BY | MWV           |
| JCHECKED BY | SWS           |

**C10**



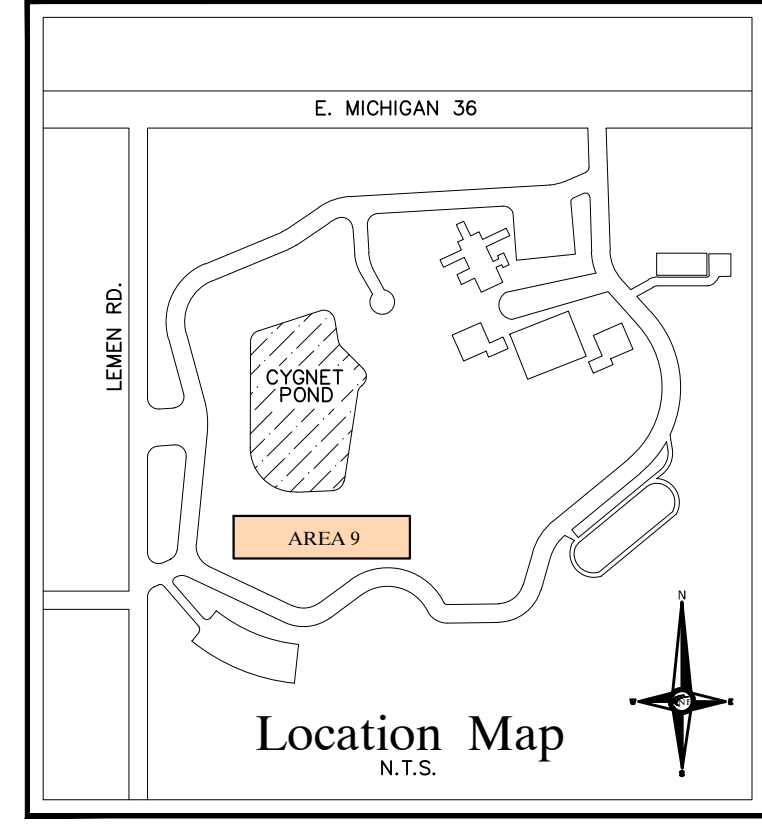


**REDUCED ACCESS AREAS**  
 THERE MAY BE AREAS THAT PROVIDE LIMITED OR REDUCED ACCESS WIDTH/AREA WITHIN THE FACILITY TO PERFORM THE PREFERRED METHOD OF HYDRO EXCAVATION DUE TO SIZE OF THE REQUIRED VEHICLES/EQUIPMENT. THE CONTRACTOR MAY REQUEST AN ALTERNATE MEANS OF EXCAVATION TO BE REVIEWED AND APPROVED BY THE FACILITY PRIOR TO PERFORMING THE WORK. LOCATIONS WHERE THIS MAY OCCUR HAVE BEEN NOTED IN EACH AREA OF WORK.

**SURFACE REPAIRS**  
 ANY PAVED OR GRAVEL AREA THAT IS DAMAGED DURING THE PROJECT SHALL BE REPAIRED "IN KIND" OR PER THE PROVIDED CROSS SECTIONS (WHICHEVER IS MORE STRINGENT).

**SANITARY STRUCTURE SCHEDULE**

|                                                                                                                   |                                                                                                                   |                                                                                                                  |
|-------------------------------------------------------------------------------------------------------------------|-------------------------------------------------------------------------------------------------------------------|------------------------------------------------------------------------------------------------------------------|
| <b>E3</b> EX. SANITARY MANHOLE<br>RIM 908.59<br>10" W. INV. 892.28<br>10" SE. INV. 892.38<br>10" SW. INV. 892.48  | <b>E6</b> EX. SANITARY MANHOLE<br>RIM 906.12<br>10" W. INV. 895.37<br>10" NE. INV. 895.52<br>10" S. INV. 895.47   | <b>E7</b> EX. SANITARY MANHOLE<br>RIM 915.76<br>10" NE. INV. 897.71<br>10" SW. INV. 897.71<br>10" N. INV. 895.47 |
| <b>E4</b> EX. SANITARY MANHOLE<br>RIM 904.82<br>10" NW. INV. 893.47<br>10" SE. INV. 892.62<br>10" SW. INV. 895.82 | <b>E5</b> EX. SANITARY MANHOLE<br>RIM 903.84<br>10" NW. INV. 894.64<br>10" NE. INV. 894.74<br>10" SE. INV. 895.09 | <b>E2</b> EX. SANITARY MANHOLE<br>RIM 918.37<br>10" NE. INV. 894.74<br>10" SE. INV. 895.82                       |



**LEGEND**

|                     |                             |
|---------------------|-----------------------------|
| MANHOLE             | EXISTING SANITARY SEWER     |
| HYDRANT             | SAN. CLEAN OUT              |
| MANHOLE CATCH BASIN | EXISTING WATER MAIN         |
| UTILITY POLE        | EXISTING STORM SEWER        |
| GUY WIRE            | EX. R. Y. CATCH BASIN       |
| GUY WIRE            | EXISTING BURIED CABLES      |
| GUY WIRE            | OVERHEAD LINES              |
| GUY WIRE            | LIGHT POLE                  |
| GUY WIRE            | SIGN                        |
| C.O. MANHOLE        | EXISTING GAS MAIN           |
| HYDRANT             | PR. SANITARY SEWER          |
| INLET               | PR. WATER MAIN              |
| C.B. MANHOLE        | PR. STORM SEWER             |
| C.B. MANHOLE        | PR. R. Y. CATCH BASIN       |
| C.B. MANHOLE        | SAND BACKFILL (95% DENSITY) |
| C.B. MANHOLE        | PROPOSED LIGHT POLE         |

PROJECT NO. K44806  
 4275 WOODLAND AVENUE  
 FORT LEE, MI 48434-5032  
 TEL. (248) 332-7931  
 FAX. (248) 332-8257

CIVIL ENGINEERS  
 LAND SURVEYORS  
 LAND PLANNERS

**NF**  
 ENGINEERS

STATE OF MICHIGAN  
 DEPARTMENT OF TECHNOLOGY, MANAGEMENT AND BUDGET  
 STATE FACILITIES ADMINISTRATION  
 DESIGN AND CONSTRUCTION DIVISION  
 ADAM P. LACH, RA, NCARB, DIRECTOR

|              |               |               |               |        |
|--------------|---------------|---------------|---------------|--------|
| 03-17-2025   | 03-17-2025    | 08-15-2024    | 12-12-2023    | DATE   |
| BI Documents | Phase 500 90% | Phase 500 50% | Phase 400 50% | REVIEW |

PROJECT DESCRIPTION  
**WOODLAND CORRECTIONAL CENTER**  
**- UTILITY IMPROVEMENT PROGRAM**  
 WHITMORE LAKE, LIVINGSTON COUNTY, MICHIGAN

IMPROVEMENT PLAN  
**AREA 9**

|                          |             |      |         |           |     |     |
|--------------------------|-------------|------|---------|-----------|-----|-----|
| PROJECT NO. 47203128.S0W | INDEX       | PC/A | 00-0000 | MAW       | MAW | SWS |
|                          | DESIGNED BY |      |         | JCIENG BY |     |     |

**C11**

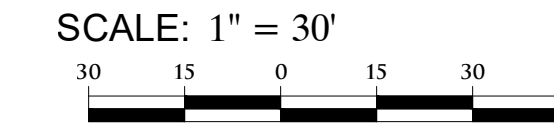
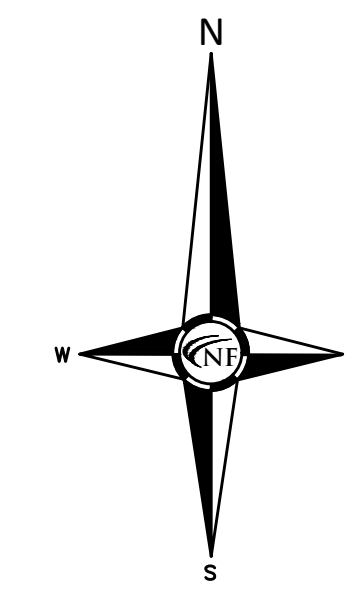
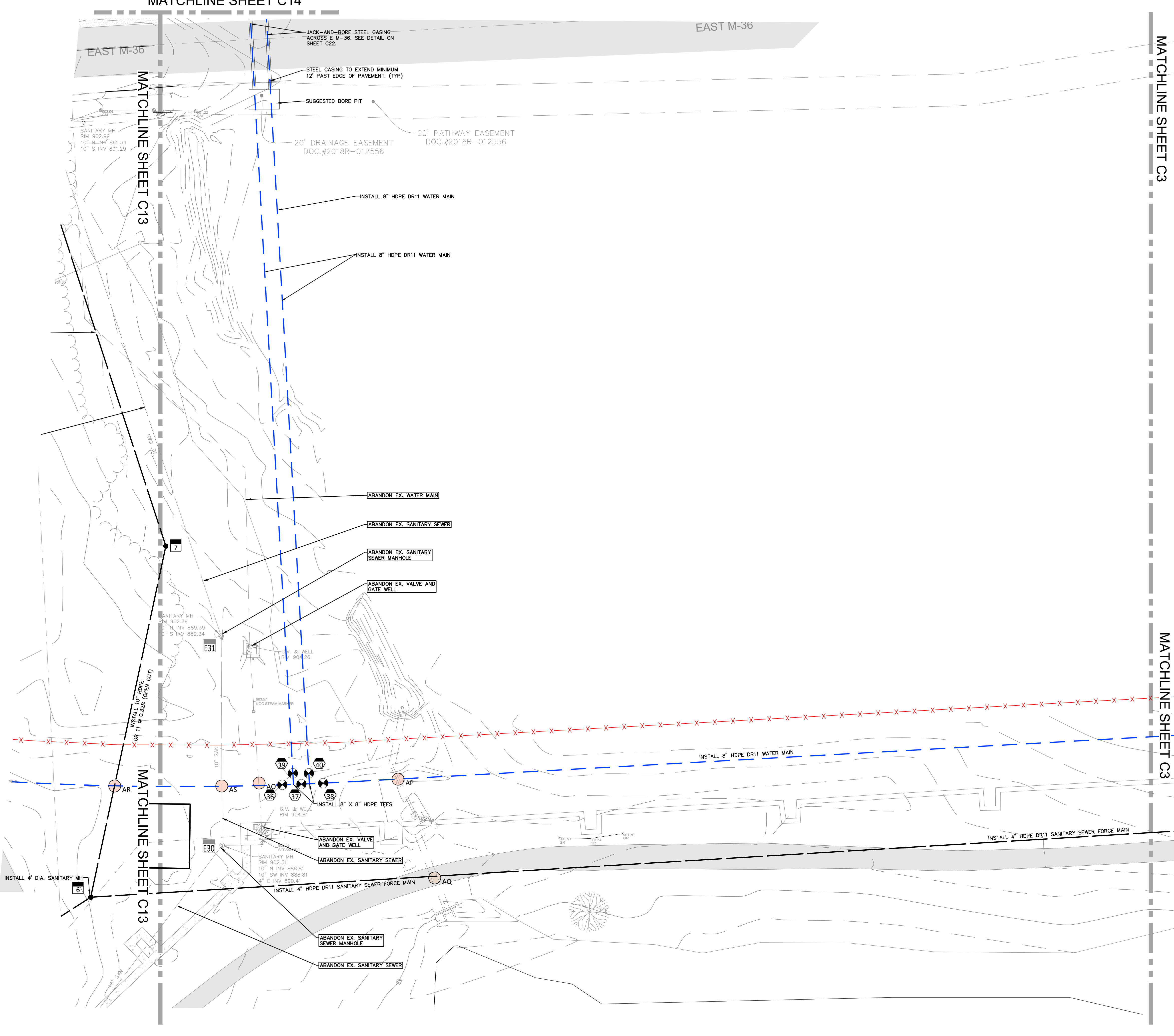


MATCHLINE SHEET C14

EAST M-36

MATCHLINE SHEET C3

MATCHLINE SHEET C3



**REDUCED ACCESS AREAS**  
 THERE MAY BE AREAS THAT PROVIDE LIMITED OR REDUCED ACCESS WIDTH/AREA WITHIN THE FACILITY TO PERFORM THE PREFERRED METHOD OF HYDRO EXCAVATION DUE TO SIZE OF THE REQUIRED VEHICLES/EQUIPMENT. THE CONTRACTOR MAY REQUEST AN ALTERNATE MEANS OF EXCAVATION TO BE REVIEWED AND APPROVED BY THE FACILITY PRIOR TO PERFORMING THE WORK. LOCATIONS WHERE THIS MAY OCCUR HAVE BEEN NOTED IN EACH AREA OF WORK.

**SURFACE REPAIRS**  
 ANY PAVED OR GRAVEL AREA THAT IS DAMAGED DURING THE PROJECT SHALL BE REPAIRED "IN KIND" OR PER THE PROVIDED CROSS SECTIONS (WHICHEVER IS MORE STRINGENT).

**WATER STRUCTURE SCHEDULE**

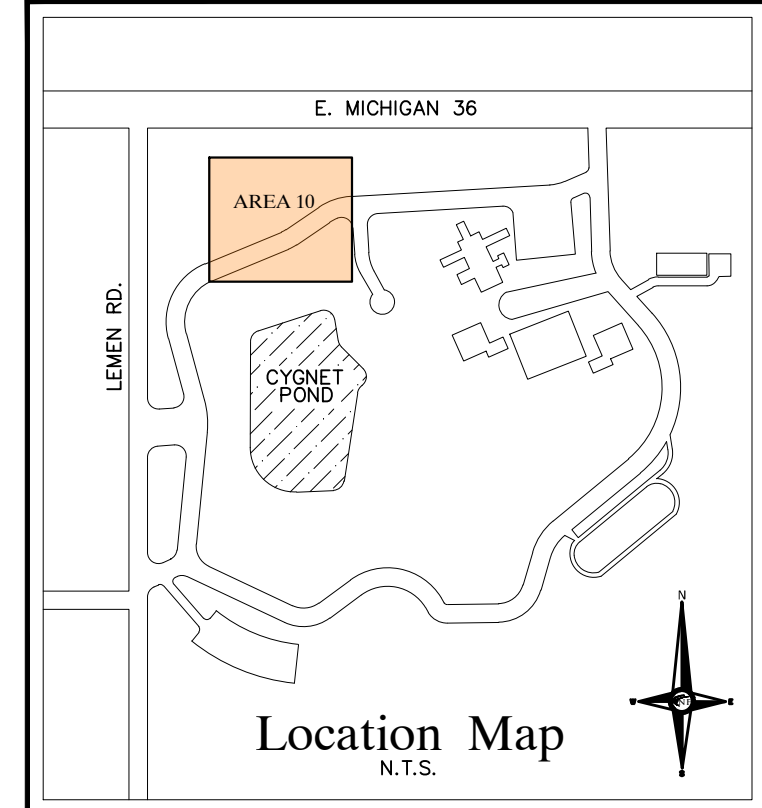
|    |                                       |
|----|---------------------------------------|
| 35 | PR. 8" GATE VALVE IN BOX<br>FG 902.80 |
| 37 | PR. 8" GATE VALVE IN BOX<br>FG 902.50 |
| 38 | PR. 8" GATE VALVE IN BOX<br>FG 901.65 |
| 39 | PR. 8" GATE VALVE IN BOX<br>FG 902.62 |
| 40 | PR. 8" GATE VALVE IN BOX<br>FG 902.62 |

**CROSSING SCHEDULE**

|    |                                                                                        |
|----|----------------------------------------------------------------------------------------|
| AR | FG. 904.65±<br>PR. 8" WATER B/P 898.48<br>EX. 10" SAN T/P 891.00                       |
| AO | FG. 903.50±<br>EX. WATER B/P 898.00<br>PR. 8" WATER T/P 896.50                         |
| AP | FG. 899.82±<br>PR. 8" WATER T/P 894.32<br>EX. STORM CULV. - FIELD INVESTIGATE          |
| AQ | FG. 902.70±<br>PR. 4" SAN FORCE MAIN T/P 897.20<br>EX. STORM CULV. - FIELD INVESTIGATE |

**SANITARY STRUCTURE SCHEDULE**

|     |                                                                                                     |     |                                                                                   |
|-----|-----------------------------------------------------------------------------------------------------|-----|-----------------------------------------------------------------------------------|
| E31 | EX. SANITARY MANHOLE<br>RM 902.51<br>10" N. INV. 888.81<br>10" SW. INV. 890.41<br>4" E. INV. 890.41 | E32 | PR. 4" SANITARY MANHOLE<br>RM 902.37<br>10" N. INV. 890.54<br>10" S. INV. 890.54  |
| E33 | EX. SANITARY MANHOLE<br>RM 902.79<br>10" N. INV. 889.39<br>10" S. INV. 889.34                       | E34 | PR. 4" SANITARY MANHOLE<br>RM 904.81<br>10" N. INV. 889.83<br>10" SW. INV. 889.83 |



**LEGEND**

|                     |                             |
|---------------------|-----------------------------|
| MANHOLE             | EXISTING SANITARY SEWER     |
| HYDRANT             | SAN. CLEAN OUT              |
| MANHOLE CATCH BASIN | EXISTING WATER MAIN         |
| UTILITY POLE        | EXISTING STORM SEWER        |
| GUY POLE            | EX. R. Y. CATCH BASIN       |
| GUY WIRE            | EXISTING BURIED CABLES      |
| MANHOLE             | OVERHEAD LINES              |
| HYDRANT             | LIGHT POLE                  |
| INLET               | SIGN                        |
| MANHOLE             | EXISTING GAS MAIN           |
| HYDRANT             | PR. SANITARY SEWER          |
| INLET               | PR. WATER MAIN              |
| MANHOLE             | PR. STORM SEWER             |
| INLET               | PR. R. Y. CATCH BASIN       |
| MANHOLE             | SAND BACKFILL (95% DENSITY) |
| INLET               | PROPOSED LIGHT POLE         |

NEE PROJECT NO. K64806  
 4675 WOODLAND AVE. SUITE 100  
 FOUNTAIN, MI 48432-5932  
 TEL. (248) 332-7931 FAX. (248) 332-8257

CIVIL ENGINEERS  
 LAND SURVEYORS  
 LAND PLANNERS

ENGINEERS

STATE OF MICHIGAN  
 DEPARTMENT OF TECHNOLOGY, MANAGEMENT AND BUDGET  
 STATE FACILITIES ADMINISTRATION  
 DESIGN AND CONSTRUCTION DIVISION  
 ADAM P. LACH, RA, NCARB, DIRECTOR

|            |              |            |               |            |               |      |        |
|------------|--------------|------------|---------------|------------|---------------|------|--------|
| 03-17-2025 | BI Documents | 08-15-2024 | Phase 500 50% | 12-12-2023 | Phase 400 50% | DATE | REVIEW |
|------------|--------------|------------|---------------|------------|---------------|------|--------|

PROJECT DESCRIPTION  
**WOODLAND CORRECTIONAL CENTER  
 - UTILITY IMPROVEMENT PROGRAM**  
 WHITMORE LAKE, LIVINGSTON COUNTY, MICHIGAN

IMPROVEMENT PLAN  
**AREA 10**

|             |               |
|-------------|---------------|
| PROJECT NO. | 47203238.S000 |
| INDEX       | 1             |
| PCA         | 00-0000       |
| DRAWN BY    | MAW           |
| DESIGNED BY | MAW           |
| JCIENG BY   | SWS           |

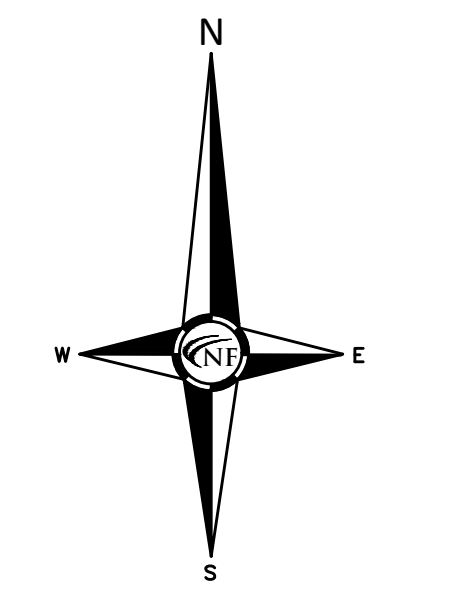
**C12**



MATCHLINE SHEET C13

STEEL CASING TO EXTEND MINIMUM  
12'-PAST EDGE OF PAVEMENT.  
SUGGESTED BORE PIT

SANITARY MH  
RM 902.99  
10" N. INV. 891.34  
10" S. INV. 891.29



SCALE:  
1" = 30'

NEE PROJECT NO. K46806  
4275 WOODLAND AVENUE  
FONTAINE, MI 48342-5031  
TEL. (248) 332-7931  
FAX. (248) 332-8257

CIVIL ENGINEERS  
LAND SURVEYORS  
LAND PLANNERS

ENGINEERS

STATE OF MICHIGAN  
DEPARTMENT OF TECHNOLOGY, MANAGEMENT AND BUDGET  
STATE FACILITIES ADMINISTRATION  
DESIGN AND CONSTRUCTION DIVISION  
ADAM P. LACH, RA, NCARB, DIRECTOR

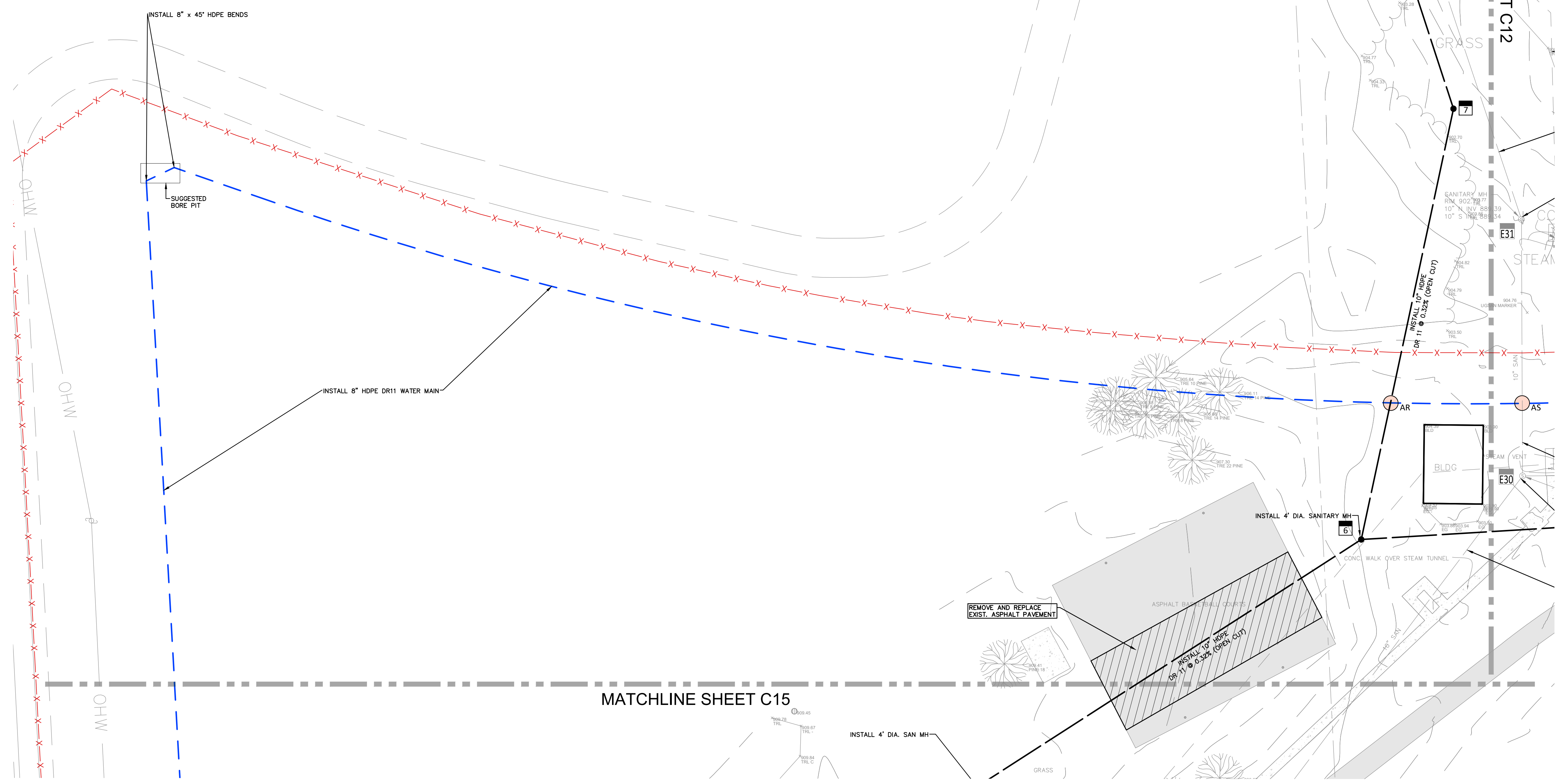
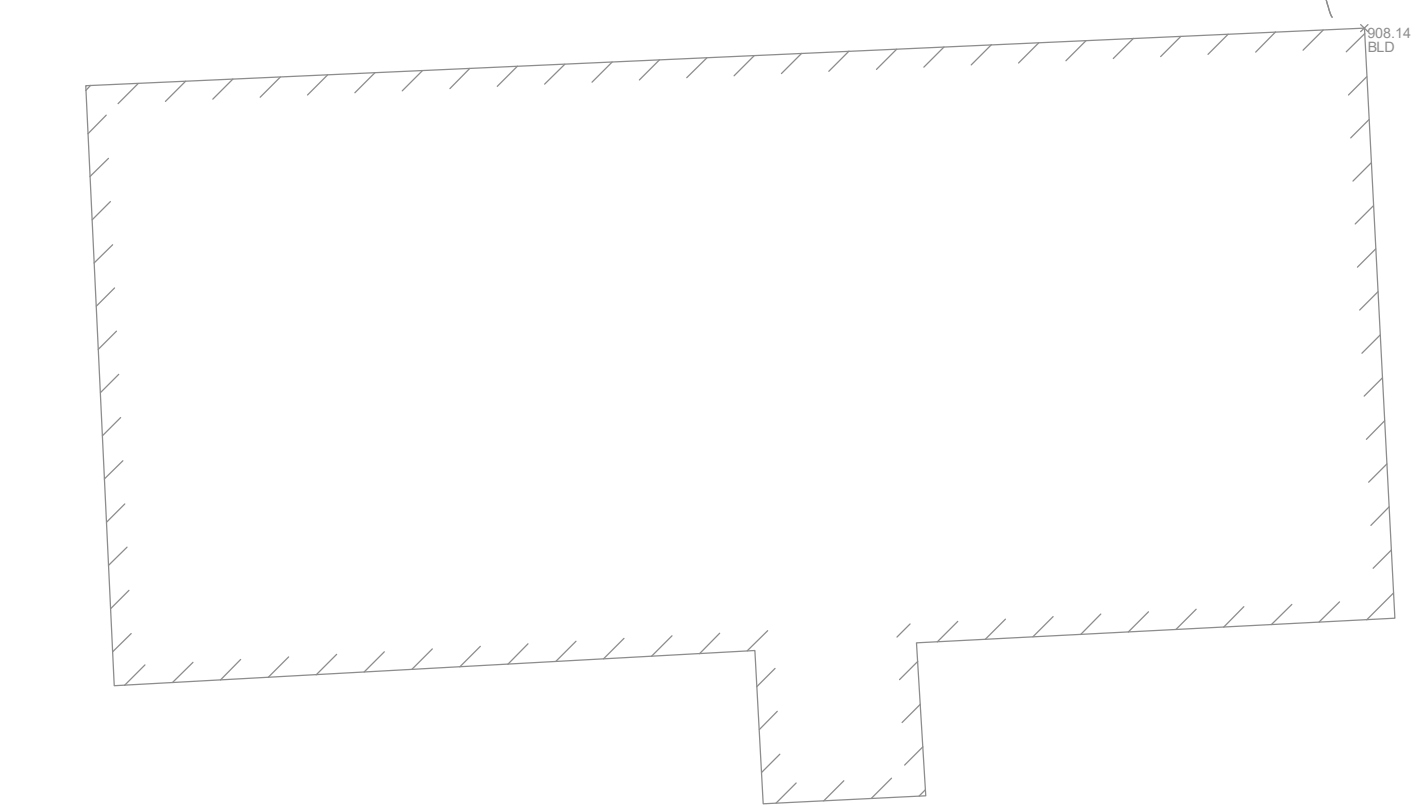
| DATE       | REVIEW        |
|------------|---------------|
| 03-17-2025 | BI Documents  |
| 12-05-2024 | Phase 500 90% |
| 08-15-2024 | Phase 500 50% |
| 12-12-2023 | Phase 400 50% |

PROJECT DESCRIPTION  
**WOODLAND CORRECTIONAL CENTER  
- UTILITY IMPROVEMENT PROGRAM**  
WHITMORE LAKE, LIVINGSTON COUNTY, MICHIGAN

IMPROVEMENT PLAN  
AREA 11

|                          |             |           |         |     |     |     |
|--------------------------|-------------|-----------|---------|-----|-----|-----|
| PROJECT NO. 47203238-S0W | INDEX       | PC/A      | 00-0000 | M/W | M/W | S/W |
|                          | DESIGNED BY | JCIENG BY |         |     |     |     |

**C13**



MATCHLINE SHEET C15

MATCHLINE SHEET C12

**REDUCED ACCESS AREAS**  
THERE MAY BE AREAS THAT PROVIDE LIMITED OR REDUCED ACCESS WIDTH/AREA WITHIN THE FACILITY TO PERFORM THE PREFERRED METHOD OF HYDRO EXCAVATION DUE TO SIZE OF THE REQUIRED VEHICLES/EQUIPMENT. THE CONTRACTOR MAY REQUEST AN ALTERNATE MEANS OF EXCAVATION TO BE REVIEWED AND APPROVED BY THE FACILITY PRIOR TO PERFORMING THE WORK. LOCATIONS WHERE THIS MAY OCCUR HAVE BEEN NOTED IN EACH AREA OF WORK.

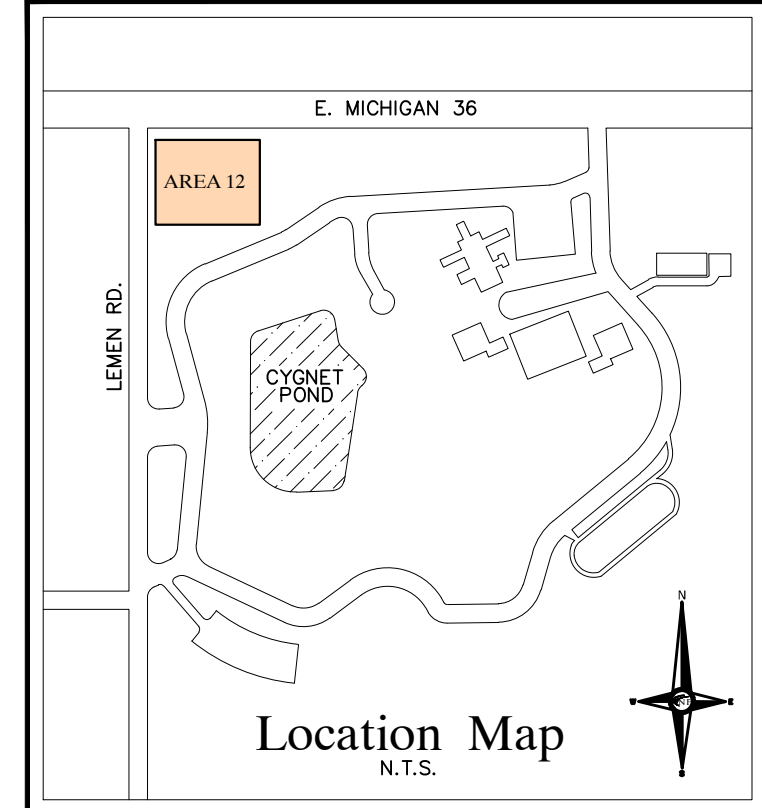
**SURFACE REPAIRS**  
ANY PAVED OR GRAVEL AREA THAT IS DAMAGED DURING THE PROJECT SHALL BE REPAIRED "IN KIND" OR PER THE PROVIDED CROSS SECTIONS (WHICHEVER IS MORE STRINGENT).

**CROSSING SCHEDULE**

|    |                                                                  |
|----|------------------------------------------------------------------|
| AR | FG. 904.654<br>PR. 10" SAN B/P 890.00<br>PR. 8" WATER T/P 899.15 |
| AS | FG. 903.814<br>PR. 8" WATER B/P 897.64<br>EX. 10" SAN T/P 888.95 |

**SANITARY STRUCTURE SCHEDULE**

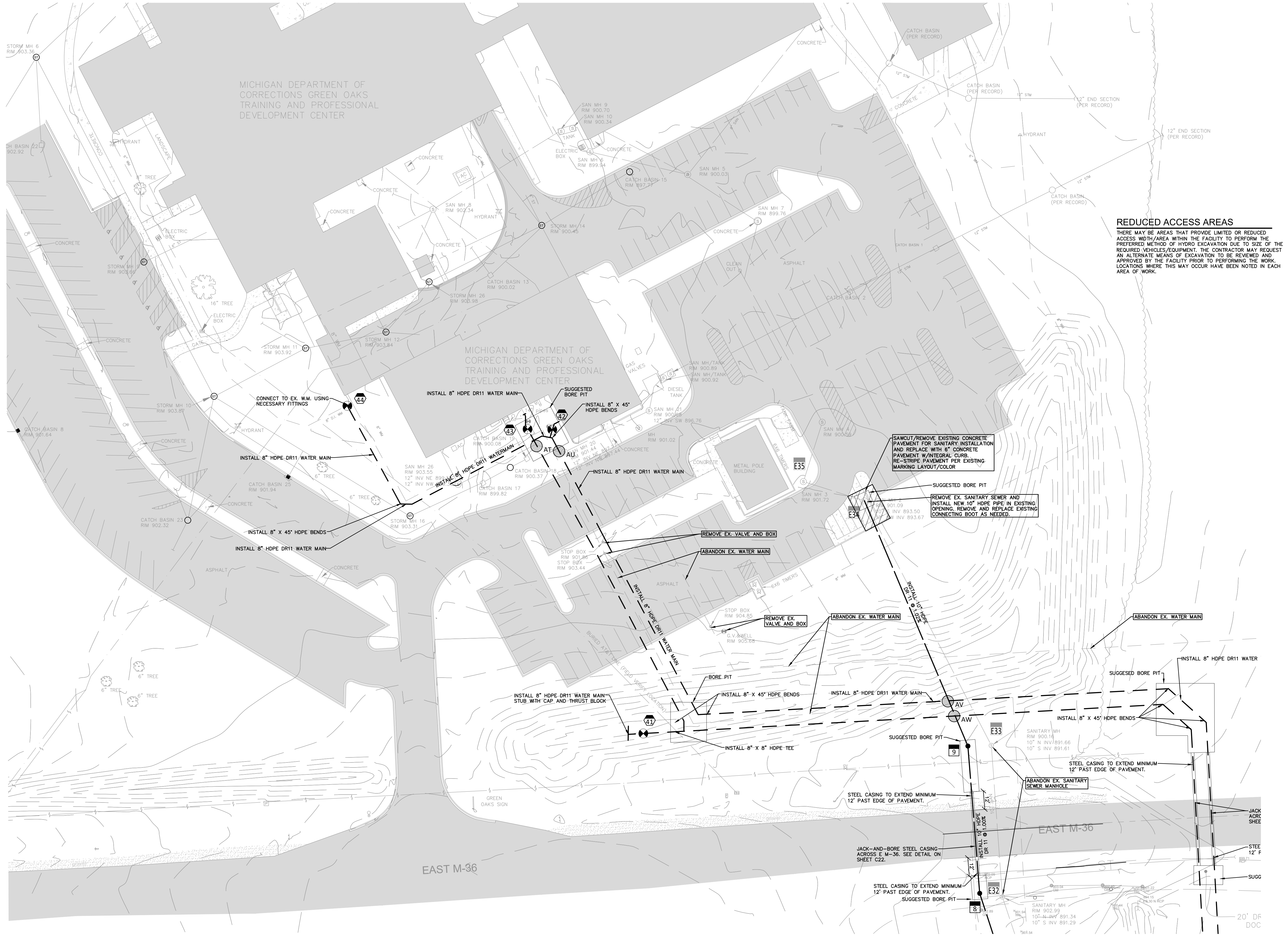
|     |                                                                                                     |    |                                                                                   |
|-----|-----------------------------------------------------------------------------------------------------|----|-----------------------------------------------------------------------------------|
| E30 | EX. SANITARY MANHOLE<br>RM 902.51<br>10" N. INV. 888.81<br>10" SW. INV. 890.41<br>4" E. INV. 890.41 | G1 | PR. 4" SANITARY MANHOLE<br>RM 903.40<br>10" N. INV. 891.43<br>10" S. INV. 891.43  |
| E31 | EX. SANITARY MANHOLE<br>RM 902.79<br>10" N. INV. 889.39<br>10" S. INV. 889.34                       | G2 | PR. 4" SANITARY MANHOLE<br>RM 902.37<br>10" N. INV. 890.54<br>10" S. INV. 890.54  |
| E32 | EX. SANITARY MANHOLE<br>RM 902.99<br>10" N. INV. 891.34<br>10" S. INV. 891.29                       | G3 | PR. 4" SANITARY MANHOLE<br>RM 904.81<br>10" N. INV. 889.83<br>10" SW. INV. 889.83 |



**LEGEND**

|                     |                             |
|---------------------|-----------------------------|
| MANHOLE             | EXISTING SANITARY SEWER     |
| HYDRANT             | SAN. CLEAN OUT              |
| MANHOLE CATCH BASIN | EXISTING WATER MAIN         |
| UTILITY POLE        | EXISTING STORM SEWER        |
| GUY POLE            | EX. R. Y. CATCH BASIN       |
| GUY WIRE            | EXISTING BURIED CABLES      |
| MANHOLE             | OVERHEAD LINES              |
| GATE VALVE          | LIGHT POLE                  |
| MANHOLE             | SIGN                        |
| HYDRANT             | EXISTING GAS MAIN           |
| INLET               | PR. SANITARY SEWER          |
| MANHOLE             | PR. WATER MAIN              |
| MANHOLE             | PR. STORM SEWER             |
| MANHOLE             | PR. R. Y. CATCH BASIN       |
| MANHOLE             | SAND BACKFILL (95% DENSITY) |
| MANHOLE             | PROPOSED LIGHT POLE         |





N  
W E  
S

SCALE: 1" = 30'

30 15 0 15 30 45

PROJECT NO. K64806  
4275 WOODLAND AVENUE  
FONTANA, MI 48342-5031  
TEL. (248) 332-7931  
FAX. (248) 332-8257

CIVIL ENGINEERS  
LAND SURVEYORS  
LAND PLANNERS

ENGINEERS

STATE OF MICHIGAN  
DEPARTMENT OF TECHNOLOGY, MANAGEMENT AND BUDGET  
STATE FACILITIES ADMINISTRATION  
DESIGN AND CONSTRUCTION DIVISION  
ADAM P. LACH, RA, NCARB, DIRECTOR

**REDUCED ACCESS AREAS**  
THERE MAY BE AREAS THAT PROVIDE LIMITED OR REDUCED ACCESS WIDTH/AREA WITHIN THE FACILITY TO PERFORM THE PREFERRED METHOD OF HYDRO EXCAVATION DUE TO SIZE OF THE REQUIRED VEHICLES/EQUIPMENT. THE CONTRACTOR MAY REQUEST AN ALTERNATE MEANS OF EXCAVATION TO BE REVIEWED AND APPROVED BY THE FACILITY PRIOR TO PERFORMING THE WORK. LOCATIONS WHERE THIS MAY OCCUR HAVE BEEN NOTED IN EACH AREA OF WORK.

**BUILDING CONNECTIONS**  
CONTRACTORS SHALL INVESTIGATE THE INTERIOR PLUMBING TO VERIFY EXACT LOCATIONS AND TYPE OF MATERIALS TO ALLOW FOR PROPER EXTERIOR RECONNECTION OF NEW MAINS AT EACH PROPOSED REFEED. THIS EFFORT SHALL BE INCLUDED IN THE BID FEES.

**SURFACE REPAIRS**  
ANY PAVED OR GRAVEL AREA THAT IS DAMAGED DURING THE PROJECT SHALL BE REPAIRED "IN KIND" OR PER THE PROVIDED CROSS SECTIONS (WHICHEVER IS MORE STRINGENT).

**WATER STRUCTURE SCHEDULE**

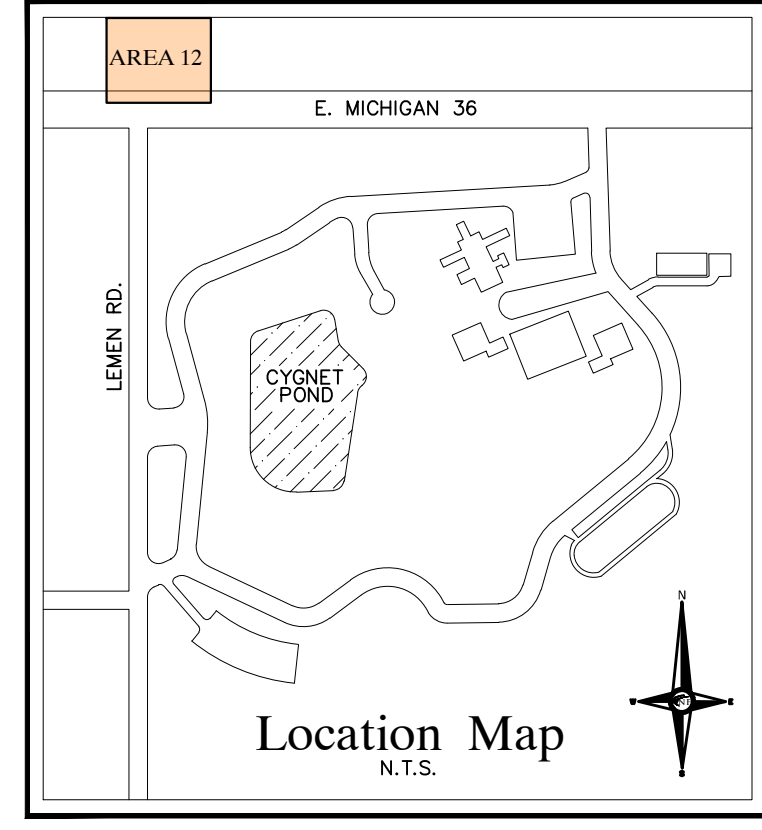
|    |                                       |
|----|---------------------------------------|
| 41 | PR. 8" GATE VALVE IN BOX<br>FG 913.31 |
| 42 | PR. 8" GATE VALVE IN BOX<br>FG 901.68 |
| 43 | PR. 8" GATE VALVE IN BOX<br>FG 901.68 |
| 44 | PR. 8" GATE VALVE IN BOX<br>FG 904.16 |

**CROSSING SCHEDULE**

|    |                                                                  |
|----|------------------------------------------------------------------|
| AT | FG. 904.654<br>PR. 10" SAN B/P 899.41<br>PR. 8" WATER T/P 897.91 |
| AU | FG. 901.404<br>EX. 12" SAN B/P 897.31<br>PR. 8" WATER T/P 895.81 |
| AV | FG. 905.628<br>PR. 8" WATER B/P 900.12<br>PR. 10" SAN T/P 893.67 |
| AW | FG. 902.204<br>PR. 8" WATER B/P 896.70<br>PR. 10" SAN T/P 893.62 |

**SANITARY STRUCTURE SCHEDULE**

|    |                                                                                |    |                                                                                    |
|----|--------------------------------------------------------------------------------|----|------------------------------------------------------------------------------------|
| 37 | EX. SANITARY MANHOLE<br>RIM 902.99<br>10" N. INV. 891.34<br>10" S. INV. 891.29 | 38 | PR. 4" SANITARY MANHOLE<br>RIM 903.40<br>10" N. INV. 891.43<br>10" S. INV. 891.43  |
| 39 | EX. SANITARY MANHOLE<br>RIM 900.16<br>10" N. INV. 891.66<br>10" S. INV. 891.61 | 9  | PR. 4" SANITARY MANHOLE<br>RIM 900.92<br>10" NW. INV. 892.39<br>10" S. INV. 892.39 |
| 34 | EX. SANITARY MANHOLE<br>RIM 901.09<br>10" S. INV. 893.50<br>10" NW 893.67      | 33 | EX. SANITARY MANHOLE<br>RIM 901.72                                                 |



**LEGEND**

|              |                             |
|--------------|-----------------------------|
| MANHOLE      | EXISTING SANITARY SEWER     |
| HYDRANT      | SAN. CLEAN OUT              |
| MANHOLE      | EXISTING WATER MAIN         |
| MANHOLE      | EXISTING STORM SEWER        |
| UTILITY POLE | EX. R. Y. CATCH BASIN       |
| GUY POLE     | EXISTING BURIED CABLES      |
| GUY WIRE     | OVERHEAD LINES              |
| MANHOLE      | LIGHT POLE                  |
| HYDRANT      | SIGN                        |
| INLET        | EXISTING GAS MAIN           |
| MANHOLE      | PR. SANITARY SEWER          |
| GATE VALVE   | PR. WATER MAIN              |
| MANHOLE      | PR. STORM SEWER             |
| MANHOLE      | PR. R. Y. CATCH BASIN       |
| MANHOLE      | SAND BACKFILL (95% DENSITY) |
| MANHOLE      | PROPOSED LIGHT POLE         |

**BID DOCUMENTS**

|            |               |        |
|------------|---------------|--------|
| 03-17-2025 | Phase 500 90% | REVIEW |
| 12-05-2024 | Phase 500 50% |        |
| 08-15-2024 | Phase 400 50% |        |
| 12-12-2023 |               | DATE   |

PROJECT DESCRIPTION  
**WOODLAND CORRECTIONAL CENTER  
- UTILITY IMPROVEMENT PROGRAM  
AREA 12**  
WHITMORE LAKE, LIVINGSTON COUNTY, MICHIGAN

PROJECT NO. 4720328.S00  
INDEX  
PCA 00-0000  
DRAWN BY MAW  
DESIGNED BY MAW  
CHECKED BY JCIENG BY SWS

**C14**

MATCHLINE C12